



"PKX" Series – Right Angle ServoFit® Precision Planetary Gearhead Dimensional Data

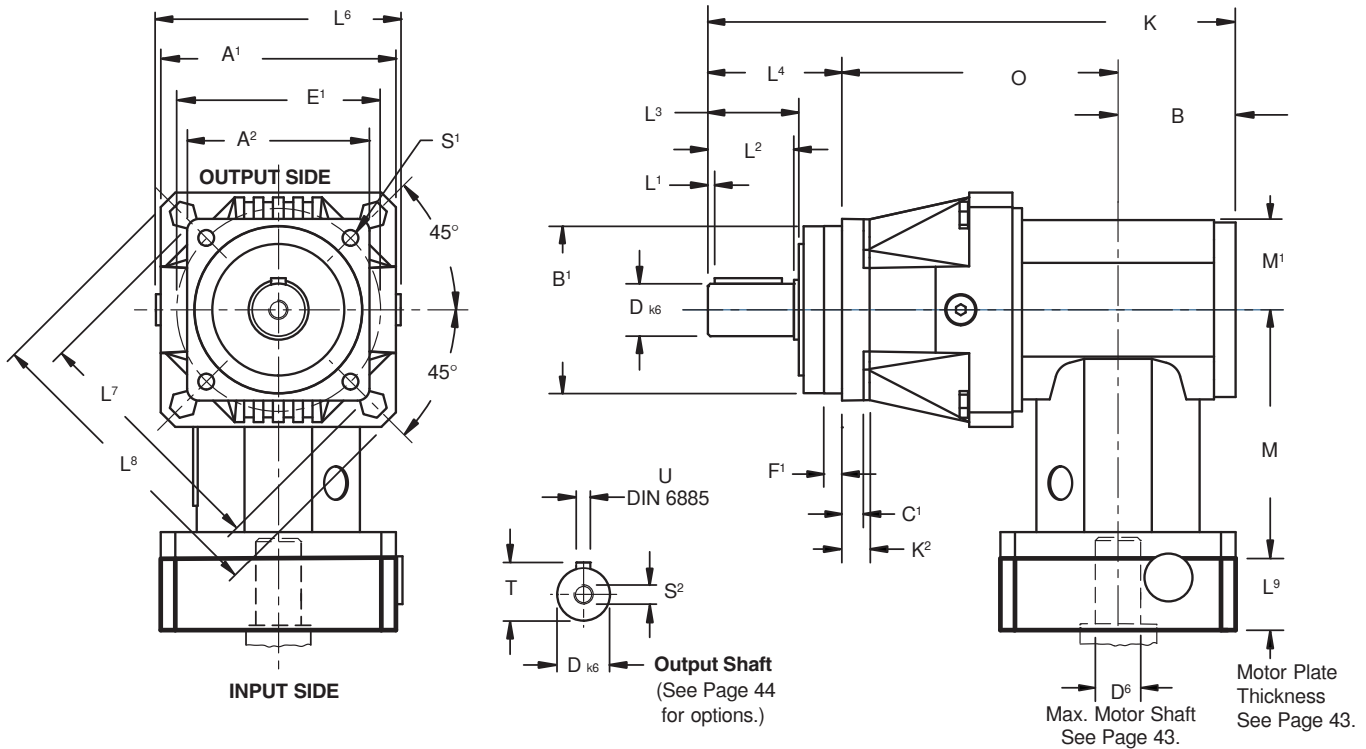


Table No. 1 "PKX" Series – ServoFit Precision Planetary Gearhead Dimensions (mm)

Unit	A ¹	A ²	B ¹ h ₆	C ¹	D k ₆	E ¹	F ¹	K ²	L ¹	L ²	L ³	L ⁴	L ⁶	L ⁷	L ⁸	S ¹	S ²	T	U
P221S_KX3	55	55	50 +.000/-0.016	6	12 +.012/+0.001	63	7.0	—	2	22	24	36	62	74	80	5.5	M4x13.5	13.5	A4x4x18
P321S_KX3	72	72	60 +.000/-0.019	7	16 +.012/+0.001	75	7.5	—	2	28	30	48	79	—	92	5.5	M5x12.5	18	A5x5x22
P421S_KX4	98	76	70 +.000/-0.019	9	22 +.015/+0.002	85	7.5	12	3	36	38	56	98	103.3	130	6.6	M8x19	24.5	A6x6x28
P521S_KX5	115	101	90 +.000/-0.022	10	32 +.018/+0.002	120	15	14	3	58	60	88	121	139	149	9	M12x28	35	A10x8x50
P721S_KX7	145	145	130 +.000/-0.025	15	40 +.018/+0.002	165	3.5	—	4	82	85	112	145	—	190	11	M16x36	43	A12x8x70
P821S_KX8	190	190	160 +.000/-0.025	15	55 +.021/+0.002	215	10	—	6	82	85	112	190	—	250	13.5	M20x42	59	A12x8x70

Table No. 2 Dimensions (mm)

Unit	B	K	M	M ¹	O
P221S_KX3	40	160	95.5	31	84
P321S_KX3	40	184	95.5	31	96
P421S_KX4	49	220	104	37.5	115
P521S_KX5	60	277	132	45	129
P721S_KX7	74	343	172.5	60	157
P821S_KX8	92	417	210	75	213

Part No. Example

P421SPR0100KX401VF 0030MF

Specify: Mounting Position
Paint, if not *Black*
Motor Information



"PKX" Series – Right Angle ServoFit® Precision Planetary Gearhead Dimensional Data



PKX

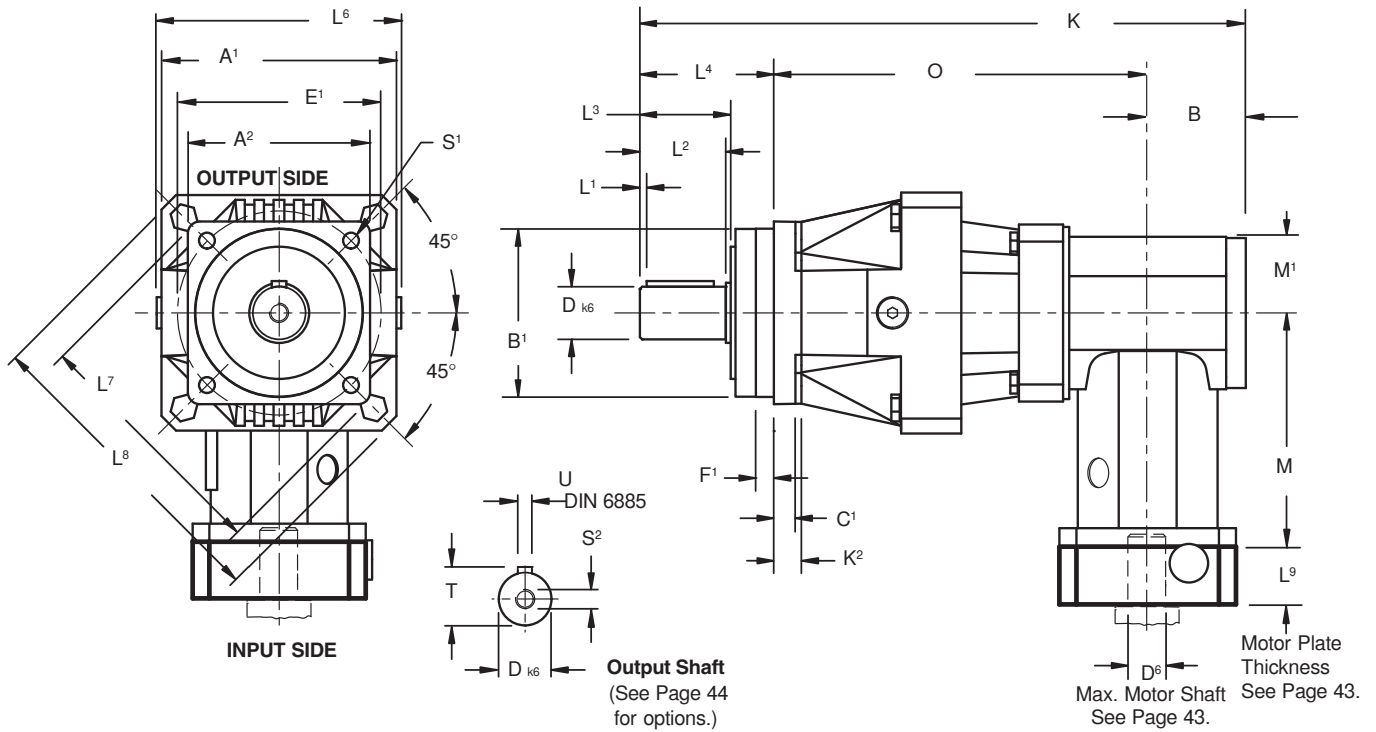


Table No. 3 "PKX" Series – ServoFit Precision Planetary Gearhead Dimensions (mm)

Unit	A ¹	A ²	B ¹ h ₆	C ¹	D _{k6}	E ¹	F ¹	K ²	L ¹	L ²	L ³	L ⁴	L ⁶	L ⁷	L ⁸	S ¹	S ²	T	U
P222S_KX3	55	55	50 +.000/-0.016	6	12 +.012/+0.001	63	7.0	—	2	22	24	36	62	74	80	5.5	M4x13.5	13.5	A4x4x18
P322S_KX3	72	72	60 +.000/-0.019	7	16 +.012/+0.001	75	7.5	—	2	28	30	48	79	92	92	5.5	M5x18	18	A5x5x22
P422S_KX3	98	76	70 +.000/-0.019	9	22 +.015/+0.002	85	7.5	12	3	36	38	56	98	103.3	130	6.6	M8x19	24.5	A6x6x28
P522S_KX4	115	101	90 +.000/-0.022	10	32 +.018/+0.002	120	15	14	3	58	60	88	121	139	149	9	M12x28	35	A10x8x50
P722S_KX5	145	145	130 +.000/-0.025	15	40 +.018/+0.002	165	3.5	—	4	82	85	112	145	—	190	11	M16x36	43	A12x8x70
P822S_KX7	190	190	160 +.000/-0.025	15	55 +.021/+0.002	215	10	—	6	82	85	112	190	—	250	13.5	M20x42	59	A16x10x70
P922S_KX8	225	212	180 +.000/-0.025	17	75 +.021/+0.002	250	10	22	7	105	109	143	225	285	300	17.5	M20x42	79.5	A20x12x90

Table No. 4 Dimensions (mm)

Unit	B	K	M	M ¹	O
P222S_KX3	40	192	95.5	31	116
P322S_KX3	40	224	95.5	31	136
P422S_KX3	40	249.5	95.5	31	153.5
P522S_KX4	49	309.5	104	37.5	172.5
P722S_KX5	60	378	132	45	206
P822S_KX7	74	451.5	172.5	60	265.5
P922S_KX8	92	575	210	75	340

See Page 42 for Options and Part Number Configuration.