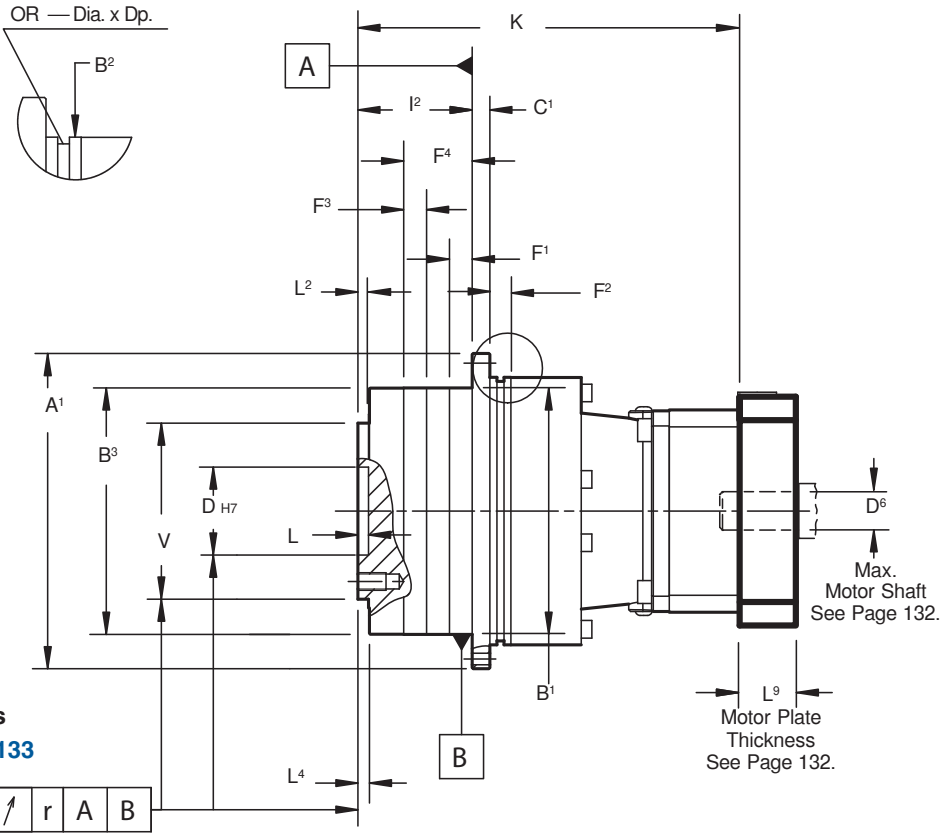




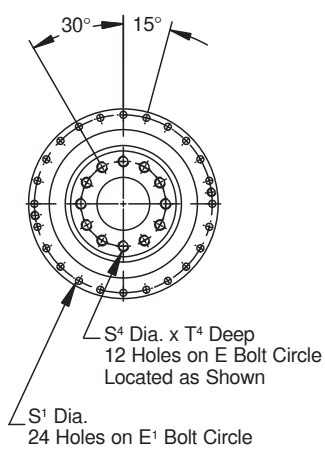
"PHQ" Series ServoFit® Precision Planetary Gearhead Dimensional Data



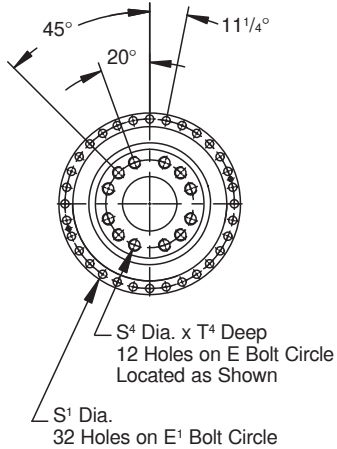
P
H
Q



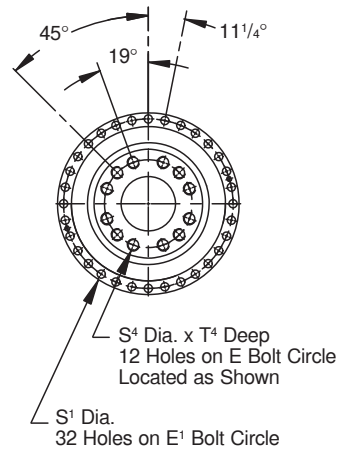
Drawing for Units
PHQ722 thru PHQ1133



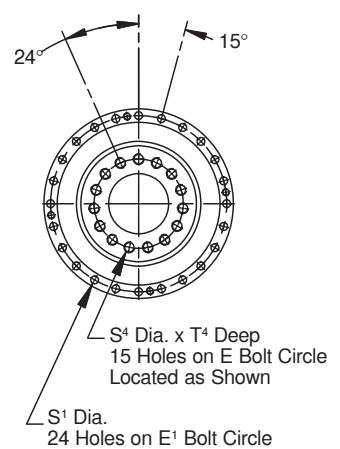
PHQ7/PHQ8
OUTPUT SIDE



PHQ9
OUTPUT SIDE

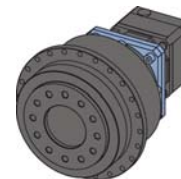


PHQ10
OUTPUT SIDE



PHQ11
OUTPUT SIDE

Part No. Example
PHQ822F0050MTL
Specify: Mounting Position (if third stage)
B² Side Mounting, if required
Paint, if not *Black*
Motor Information



Typical 3 Stage Configuration



"PHQ" Series ServoFit® Precision Planetary Gearhead Dimensional Data



Table No. 1

"PHQ" Series – Gearhead with Motor Plate – Dimensions (mm)

Unit	A ¹	B ¹	B ²	B ³	C ¹	D _{H6}	E	E ¹	F ¹	F ²	F ¹	F ²	I ²	L	L ²	L ⁴	OR
PHQ722/PHQ723	179 _{h7}	140 _{h7}	152 _{h7}	—	10	50	80	168	12	12	—	—	38	6	6	6	145x3
PHQ822/PHQ823	247 _{h7}	200 _{h7}	212 _{h7}	—	12	80	125	233	15	15	—	—	50	8	8	8.5	200x5
PHQ932/PHQ933	300 _{h7}	255 _{h7}	255 _{h7}	—	18	90	145	280	20	33	—	—	66	12	11	12	238x5
PHQ1032/PHQ1033	330 _{h7}	285 _{h7}	285 _{h7}	—	20	95	166	310	20	20	—	—	75	10	15	15	270x6
PHQ1132/PHQ1133	425	365 _{h6}	—	365 _{h6}	32	120	200	395	30	30	30	120	190	10	10	10	—

Table No. 2 "PHQ" Dimensions (mm)

Unit	R	S ¹	S ⁴	T ⁴	V _{h7}
PHQ722/PHQ723	.025	6.6	M10	16	100
PHQ822/PHQ823	.030	9	M12	17	160
PHQ932/PHQ933	.030	13.5	M20	28	180
PHQ1032/PHQ1033	.040	13.5	M24	35	200
PHQ1132/PHQ1133	.040	17.5	M24	36	260

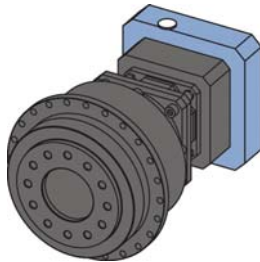
Table No. 3 Dimensions (mm)

Standard			Large Input		
Unit	A ⁵	K	Unit	A ⁵	K
PHQ722	115	190	PHQ722_L	145	204
PHQ723	100	239.5	PHQ723_L	115	248
PHQ822	145	251	PHQ822_L	190	268
PHQ823	115	303	PHQ823_L	145	204
PHQ932	190	316	PHQ932_L	225	357.5
PHQ933	145	383.5	PHQ933_L	190	434
PHQ1032	225	370	—	—	—
PHQ1033	190	458	PHQ1033_L	225	511
PHQ1132	310	473	—	—	—
PHQ1133	190	553.5	PHQ1133_L	225	561.5

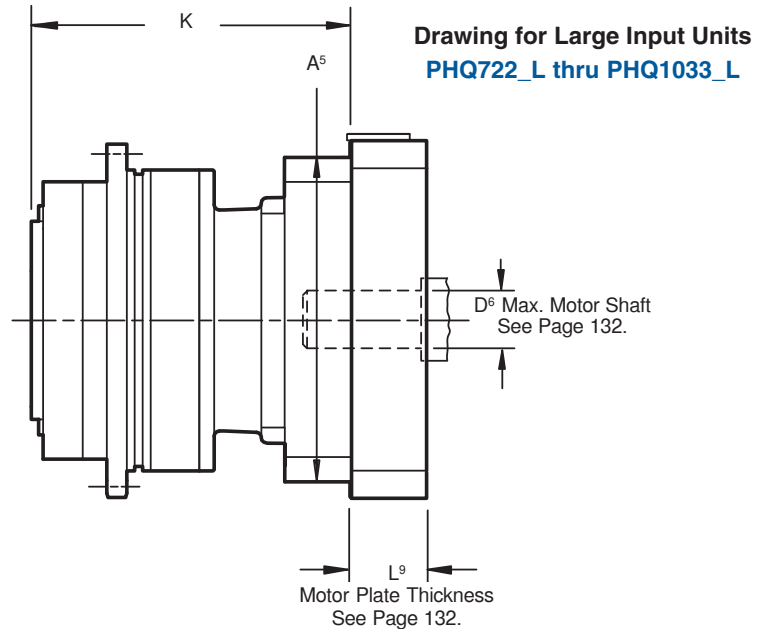
If a planetary gearhead is to be mounted from "B²" side, specify when ordering. For proper mounting the paint must be eliminated and the tolerance held on that surface.



Side "B²" mounting is not possible with the Large Input.



Typical Large Input Configuration



PHQ

See Page 132 for Options and Part Number Configuration.