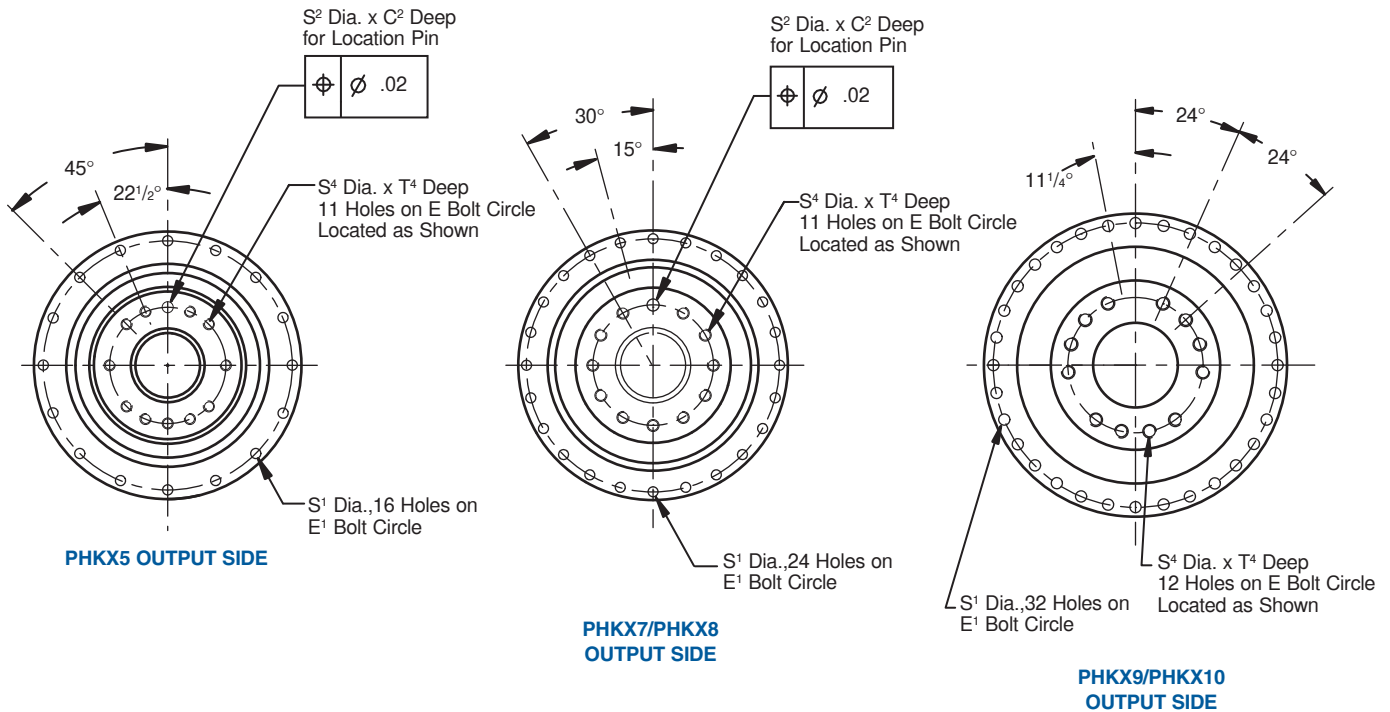
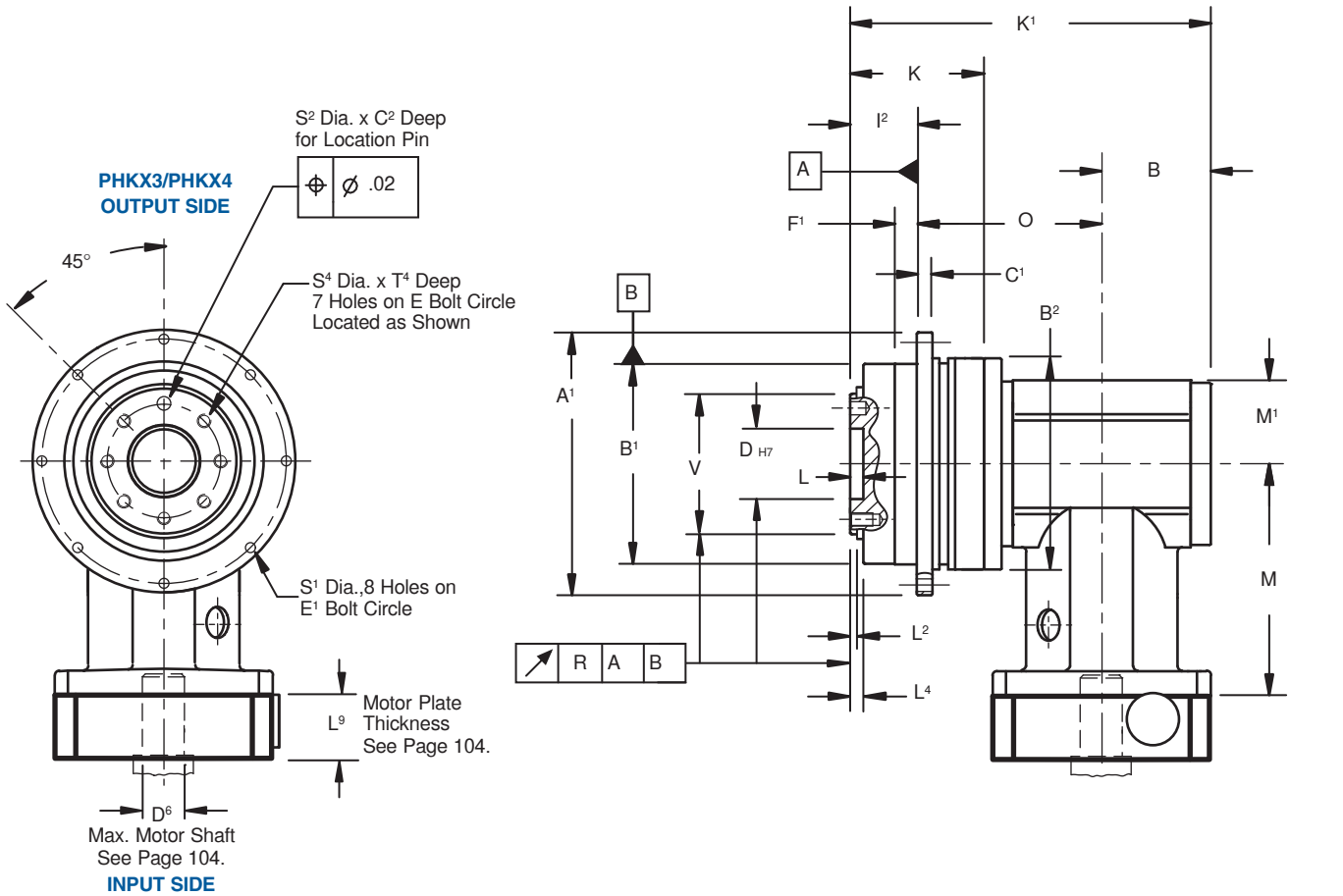




# "PHKX" Series – Right Angle ServoFit® Precision Planetary Gearhead Dimensional Data



PHKX





# "PHKX" Series – Right Angle ServoFit® Precision Planetary Gearhead Dimensional Data



PHKX

**Table No. 1 "PHKX" Series – Gearhead with Motor Plate – Dimensions (mm)**

Unit	A <sup>1</sup> <sub>h7</sub>	B <sup>1</sup> <sub>h7</sub>	B <sup>2</sup>	C <sup>1</sup>	C <sup>2</sup>	D <sub>H7</sub>	E	E <sup>1</sup>	F <sup>1</sup>	I <sup>2</sup>	L	L <sup>2</sup>	L <sup>4</sup>	R	S <sup>1</sup>	S <sup>2</sup> <sub>H7</sub>
PH3_KX	86 +.000/-0.035	64 +.000/-0.030	70	4	3	20 +.021/-0.0	31.5	79	7	19.5	4	3	3.5	.020	4.5	5 +.012/-0.000
PH4_KX	118 +.000/-0.035	90 +.000/-0.035	95	7	7	31.5 +.025/-0.0	50	109	10	30	6	6	6	.020	5.5	6 +.012/-0.000
PH5_KX	145 +.000/-0.040	110 +.000/-0.035	120	8	7	40 +.025/-0.0	63	135	10	29	6	6	6	.020	5.5	6 +.012/-0.000
PH7_KX	179 +.000/-0.040	140 +.000/-0.040	152	10	7	50 +.025/-0.0	80	168	12	38	6	6	6	.025	6.6	8 +.015/-0.000
PH8_KX	247 +.000/-0.046	200 +.000/-0.046	212	12	10	80 +.030/-0.0	125	233	15	50	8	8	8	.030	9	10 +.015/-0.000
PH9_KX	300 —	255 +.000/-0.052	255	18	—	90 +.035/-0.0	140	280	20	66	12	11	12	.030	13.5	—
PH10_KX	330 —	285 +.000/-0.052	285	20	—	95 +.035/-0.0	160	310	20	75	10	15	15	.040	13.5	—

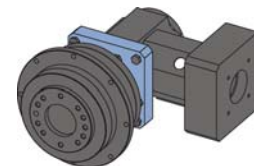
**Table No. 2 "PHKX" Series**

Unit	S <sup>4</sup>	T <sup>4</sup>	V <sub>h7</sub>
PH3_KX	M5	7	40 +.000/-0.025
PH4_KX	M6	11	63 +.000/-0.030
PH5_KX	M6	11	80 +.000/-0.030
PH7_KX	M8	14	100 +.000/-0.035
PH8_KX	M10	18	160 +.000/-0.040
PH9_KX	M16	24	180 +.000/-0.046
PH10_KX	M20	30	200 +.000/-0.046

**Table No. 3 "PHKX" Series Dimensions (mm)**

Unit	B	K	K <sup>1</sup>	M	M <sup>1</sup>	O
PH321_KX3	40	50	133.5	95.5	31	74
PH322_KX3	40	87	169.5	95.5	31	110
PH421_KX4	50	66	167	104	37.5	87
PH422_KX3	40	113	195.5	95.5	31	125.5
PH521_KX5	59	70	193	132	45	105
PH522_KX4	50	124.5	227.5	104	37.5	148.5
PH721_KX7	74	88	239	172.5	60	127
PH722_KX5	59	150	273	132	45	176
PH821_KX8	92	126	317.5	210	75	175.5
PH822_KX7	74	201	352	172.5	60	228
PH932_KX8	92	277.5	470.5	210	75	312.5
PH1032_KX8	92	307	500	210	75	333

**Part No. Example**  
**PH421F0050KX401VF0020MF**  
**Specify:** Mounting Position  
 Paint, if not *Black*  
 Motor Information



Typical 2 Stage Configuration

**See Page 104 for Options and Part Number Configuration.**