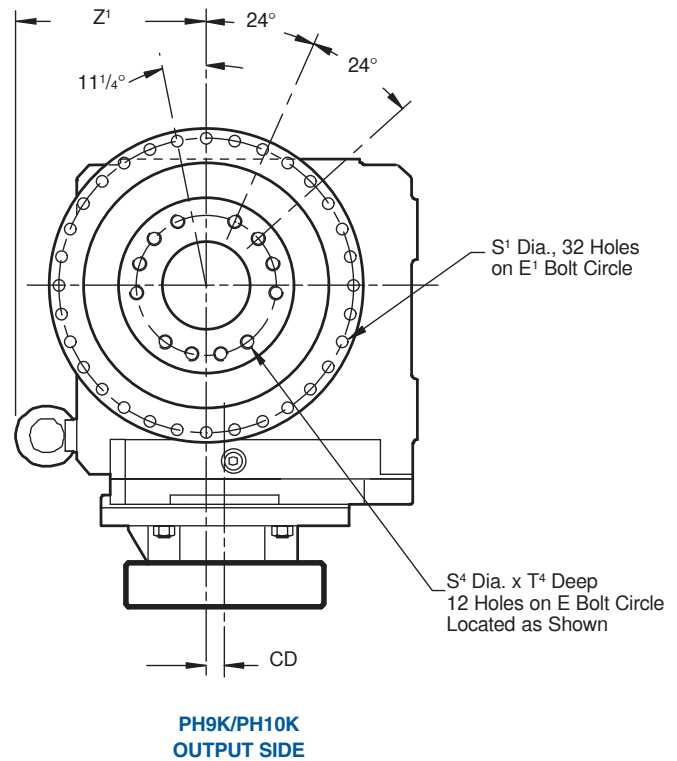
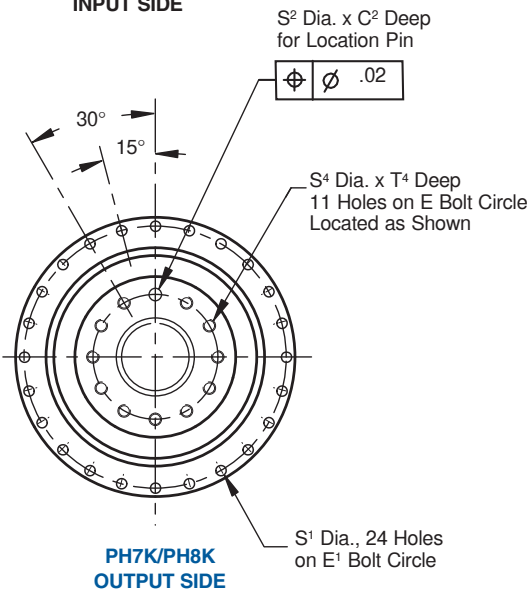
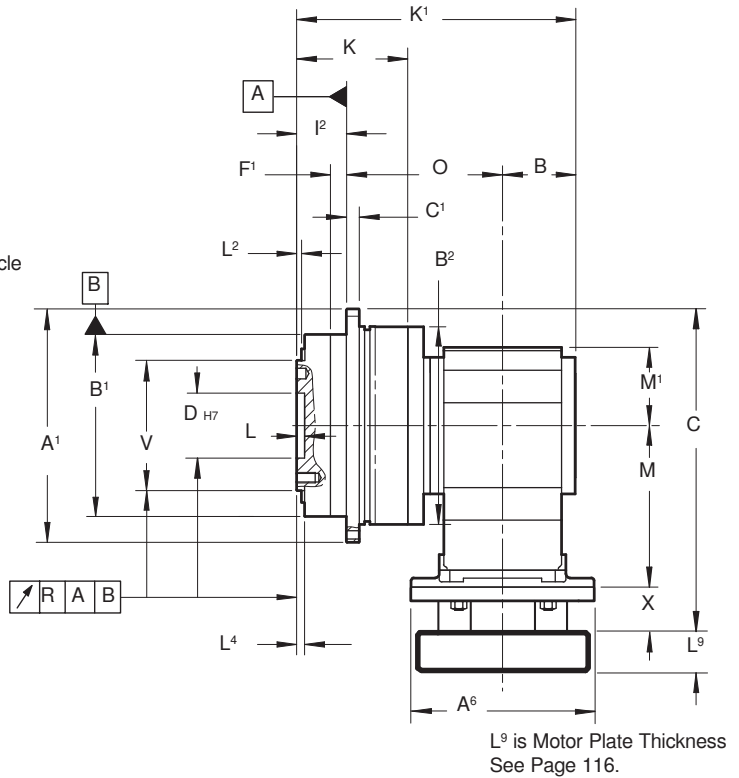
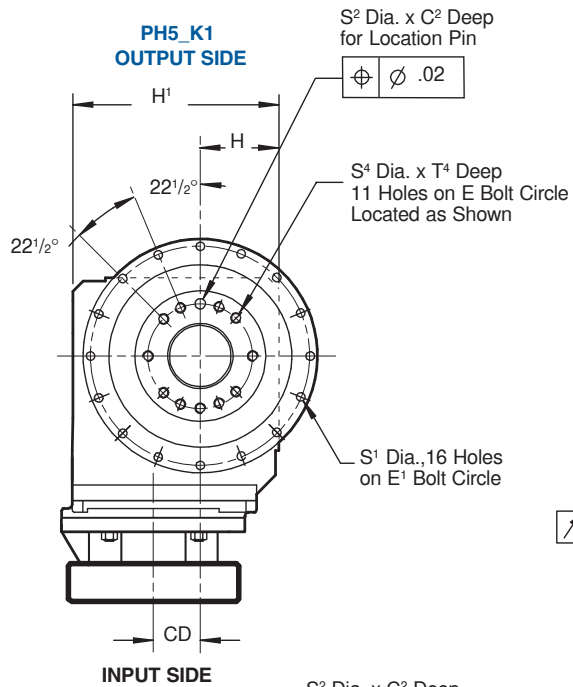




"PHK" Series – Right Angle ServoFit® Precision Planetary Gearhead Dimensional Data



PHK



Part No. Example
PH521F0050K102VF0060MT10

Specify: Mounting Position
Side 3 or 4 for PH
Paint, if not *Black*
Motor Information



"PHK" Series – Right Angle ServoFit® Precision Planetary Gearhead Dimensional Data



PHK

Table No. 1 "PHK" Series – Gearhead with Motor Plate – Dimensions (mm/inches)

Unit	A ¹	B	B ¹ h7	B ²	C ¹	C ²	D h7	E	E ¹	F ¹	H	H ¹	I ²	L	L ²	L ⁴	R	S ¹
PH521_K102	145	56	110 +.000/-0.035	120	8	7	40 +.025/-0	63	135	10	60	160	29	6	6	6	.020	5.5
PH721_K102	179	56	140 +.000/-0.040	152	10	7	50 +.025/-0	80	168	12	60	160	38	6	6	6	.025	6.6
PH721_K202	179	70	140 +.000/-0.040	152	10	7	50 +.025/-0	80	168	12	65	190	38	6	6	6	.025	6.6
PH821_K202	247	70	200 +.000/-0.046	212	12	10	80 +.030/-0	125	233	15	65	190	50	8	8	8	.030	9
PH821_K302	247	76	200 +.000/-0.046	212	12	10	80 +.030/-0	125	233	15	75	213	50	8	8	8	.030	9
PH931_K513	300	96	255 +.000/-0.052	255	18	—	90 +.035/-0	140	280	20	160	260	66	12	11	12	.030	13.5
PH1031_K613	330	103.5	285 +.000/-0.052	285	20	—	95 +.035/-0	160	310	20	190	310	75	10	15	15	.040	13.5

Table No. 2 "PHK" Series – Dimensions (mm/inches)

Unit	K	K ¹	M ¹	O	S ² H7	S ⁴	T ⁴	V h7	Z ¹
PH521_K102	70	201	60	116	6 +.012/-0.000	M6	11	80 +.000/-0.030	—
PH721_K102	88	214	60	120	8 +.015/-0.000	M8	14	100 +.000/-0.035	—
PH721_K202	88	242	65	134	8 +.015/-0.000	M8	14	100 +.000/-0.035	—
PH821_K202	126	284.5	65	164.5	10 +.015/-0.000	M10	18	160 +.000/-0.040	—
PH821_K302	126	298	75	172	10 +.015/-0.000	M10	18	160 +.000/-0.040	—
PH931_K513	145	358.5	100	196.5	—	M16	24	180 +.000/-0.040	312
PH1031_K613	126	393.5	120	215	—	M20	30	200 +.000/-0.046	362

Table No. 3 "PHK" Dimensions

Motor Adapter	Motor Shaft D ⁶ Max. ¹⁾	Thickness ²⁾ L ⁹ Min.	A ⁶	X	Wt. lbs.
MT10	19	21	140	40	5
MT20	24	24	160	50	8
MT30	38	25	200	60	12
MT40	48	33	250	50	18
MT50	60	43	300	60	16

¹⁾ If an adapter bushing is required it will be supplied as a component of the motor mounting plate.

²⁾ Motor plate maximum thickness (L⁹) will vary with motor shaft length but will not be less than shown.

Table No. 4 "PHK" Series – ServoFit Precision Planetary Gearhead (mm/inches)

Base Module	MT10			MT20			MT30			MT40			MT50			Wt. lbs.
	CD	C	M	CD	C	M	CD	C	M	CD	C	M	CD	C	M	
PH521_K102	36	236.5	124	36	240.5	128	—	—	—	—	—	—	—	—	—	43
PH721_K102	36	253.5	124	36	263.5	128	—	—	—	—	—	—	—	—	—	53
PH721_K202	46	278.5	143	46	286.5	147	46	296.5	149	—	—	—	—	—	—	69
PH821_K202	46	310.5	143	46	316.5	147	46	330.5	149	—	—	—	—	—	—	116
PH821_K302	52.5	332.5	169	52.5	342.5	169	52.5	352.5	169	—	—	—	—	—	—	134
PH931_K513	—	—	—	—	—	—	15	374	174	15	377	177	—	—	—	213
PH1031_K613	—	—	—	18	401	191	18	403	193	18	406	196	18	420	210	310

See Page 116 for Options and Part Number Configuration.