



# "PE" Series ServoFit® Planetary Gearhead Dimensional Data



Dimension shown in millimeters (inches).

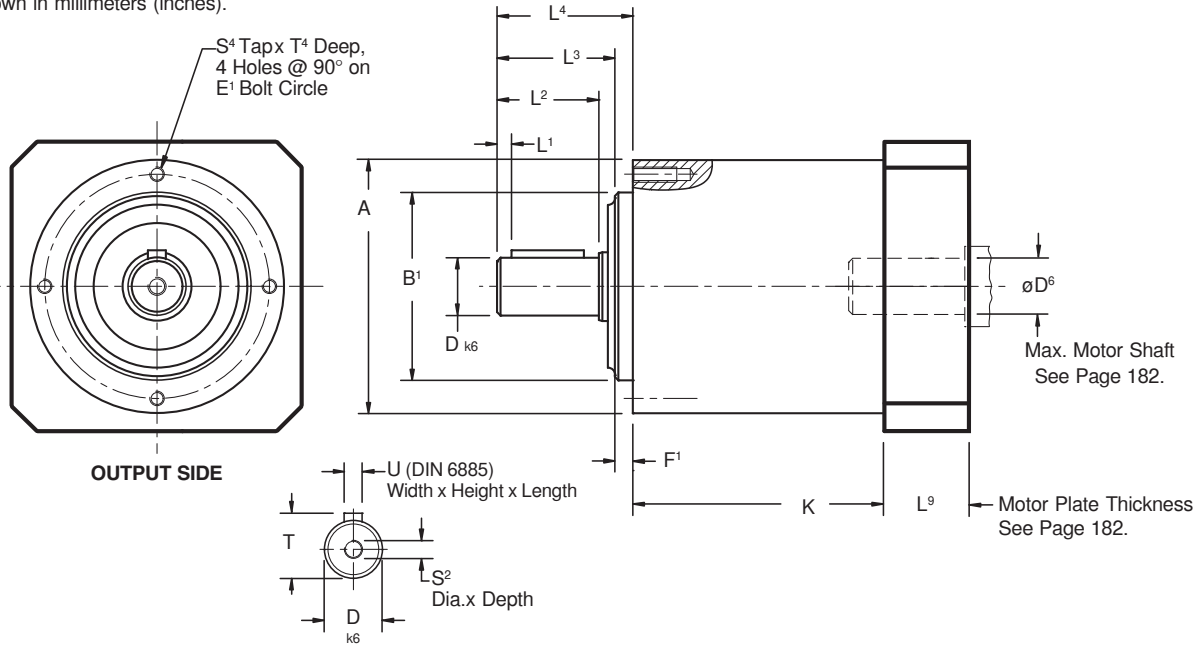


Table No. 1

"PE" Series – Planetary Gearhead Dimensions (mm)

Unit	A	B <sup>1</sup> h <sub>6</sub>	D k <sub>6</sub>	E <sup>1</sup>	F <sup>1</sup>	L <sup>1</sup>	L <sup>2</sup>	L <sup>3</sup>	L <sup>4</sup>	S <sup>2</sup>	S <sup>4</sup>	T	T <sup>4</sup>	U
PE201/PE202	50	35 +.000/-0.016	12 +.012/+0.001	44	4	2	18	20.5	24.5	M4	M4	13.5	10	A4x4x14
PE301/PE302	70	52 +.000/-0.019	16 +.012/+0.001	62	5	2	28	31	36	M5	M5	18	12	A5x5x25
PE401/PE402	90	68 +.000/-0.019	22 +.015/+0.002	80	5	3	36	41	46	M8	M6	24.5	15	A6x6x32
PE501/PE502	120	90 +.000/-0.022	32 +.018/+0.002	108	6	3	58	64	70	M12	M8	35	20	A10x8x50

Table No. 2

Unit	K
PE201	53
PE202	74.5
PE301	69
PE302	91.5
PE401	80
PE402	109
PE501	106.5
PE502	142

PE

Table No. 3 NEMA Output Flange (mm/inches)

NEMA	N <sup>1</sup>	N <sup>2</sup>	N <sup>3</sup>	N <sup>5</sup>	N <sup>6</sup>	N <sup>7</sup>	N <sup>8</sup>
23	58	2.625"	1.500" +.000/-0.001"	7	.062"	.195"	3.00"
34	83	3.875"	2.875" +.000/-0.001"	8	.062"	.218"	4.37"
42	107	4.950"	2.186" +.000/-0.001"	8	.062"	.281"	5.63"
56	146	5.875"	4.500" +.000/-0.001"	15	.125"	.394"	7.87"

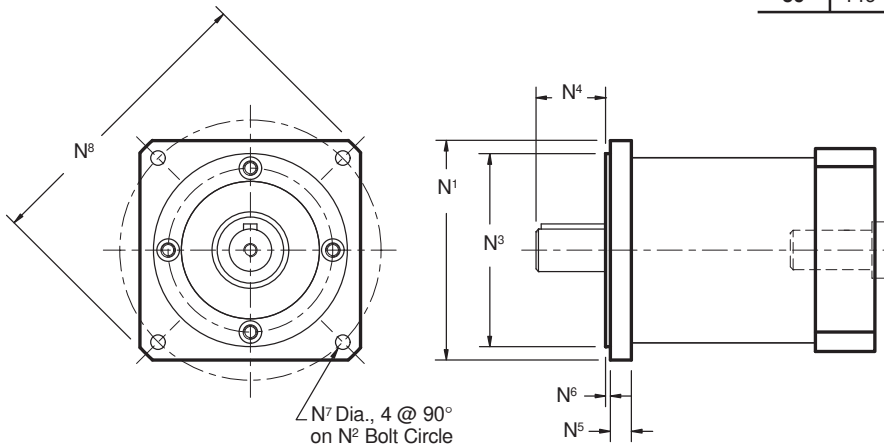


Table No. 4 N<sup>4</sup> Dims. (mm)

NEMA	PE2	PE3	PE4	PE5
23	15.9	—	—	—
34	—	26.6	36.8	—
42	—	25.6	36	—
56	—	—	—	51.8