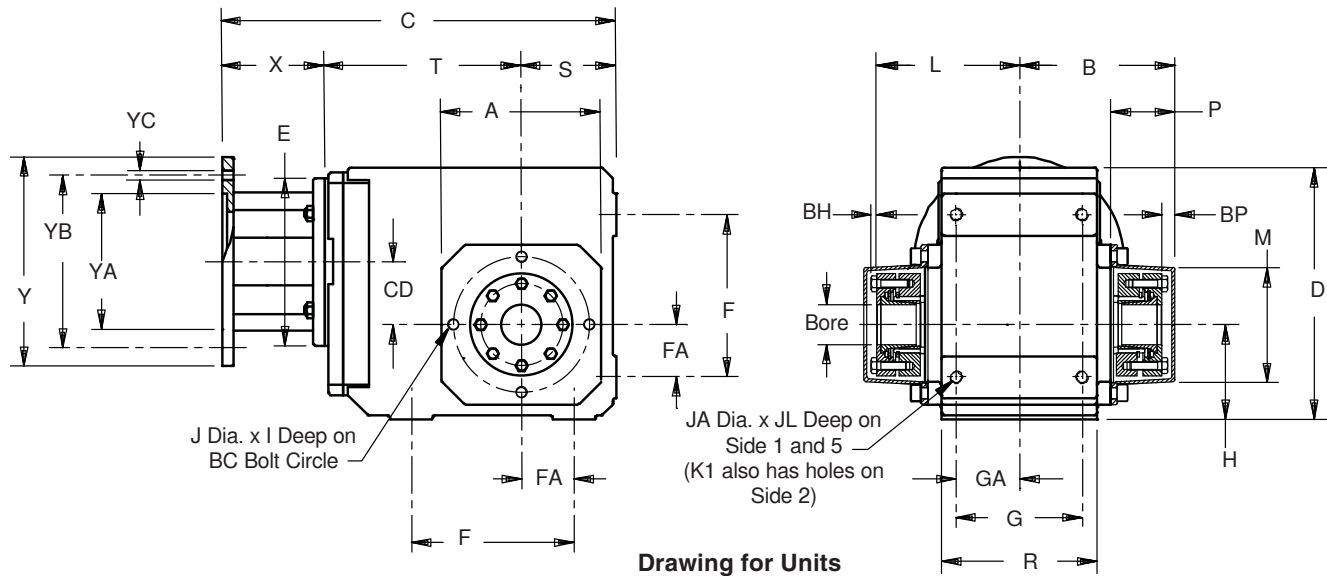


Food and Beverage Duty "K" Series – MGS Reducer Tapped Hole – "G" Housing – Double Bushing



Drawing for Units
KL202WG – K403WG

Table No. 1 "K" Series – Double Wobble Free – Unit Dimensions (Inches)

Base Module	A	B	D	F	G	H	I	J	L	M	P	R	S	Z ₁	BC	BP	BH	FA	GA	JA	JL
KL202	3.80	3.50	4.25	2.16	2.56	2.16	.43	M6 x 1	3.28	2.96	1.58	3.62	2.16	—	2.95	.22	.16	1.08	1.28	M8 x 1.25	.43
K102	4.13	3.90	6.30	3.54	2.76	2.36	.51	M8 x 1.25	3.66	3.07	1.97	3.54	2.36	—	3.54	.24	.16	1.18	1.38	M8 x 1.25	.51
K202/203	4.57	4.68	7.48	4.53	3.54	2.56	.51	M8 x 1.25	4.26	3.46	2.05	4.53	2.56	—	3.94	.39	.16	1.38	1.77	M10 x 1.5	.63
K302/303	5.20	4.98	8.39	5.12	4.13	2.95	.51	M8 x 1.25	4.54	3.78	2.09	5.12	2.95	—	4.53	.43	.16	1.57	2.07	M10 x 1.5	.63
K402/403	5.98	5.80	9.45	6.10	4.72	3.54	.63	M10 x 1.5	5.33	4.33	2.40	5.83	3.54	—	5.12	.47	.20	1.97	2.36	M12 x 1.75	.75
K513/514	5.71	6.05	10.24	5.51	4.92	6.30	.63	M10 x 1.5	5.61	4.54	2.40	6.30	3.94	5.98	5.12	.43	.20	1.57	2.46	M16 x 2.0	1.02
K613/614	7.09	6.61	12.20	6.30	5.12	7.48	.63	M10 x 1.5	6.10	5.00	2.68	6.61	4.72	6.77	6.50	.51	.24	1.97	2.56	M16 x 2.0	1.02
K713/714	7.68	7.68	13.46	7.09	5.71	8.35	.75	M12 x 1.75	7.29	5.75	2.91	7.48	4.92	7.52	7.28	.39	.24	2.17	2.85	M20 x 2.5	1.22
K813/814	8.90	9.34	16.14	9.45	7.28	10.43	.75	M12 x 1.75	8.70	6.95	3.43	9.25	5.71	8.11	8.46	.64	.31	2.95	3.64	M24 x 3	1.50

Table No. 2 Motor Adapter Dimensions (Inches)

Motor Adapter	NEMA C-Flange	E	X	Y	YA	YB	YC	Wt. lbs.
ML2R050	56C	5.51	2.99	6.50	4.500	5.87	.41	7
MR140/050	56C	5.51	3.31	6.50	4.500	5.87	.41	9
MR160/050	56C	6.30	3.86	6.50	4.500	5.87	.41	16
MR160/140	143/145TC	6.30	3.86	6.50	4.500	5.87	.41	16
MR200/180	182/184TC	7.87	4.80	9.00	8.500	7.25	.55	23
MR250/180	182/184TC	9.84	5.31	9.00	8.500	7.25	.55	36
MR250/210	213/215TC	9.84	5.31	9.00	8.500	7.25	.55	36
MR300/180	182/184TC	11.81	6.50	9.00	8.500	7.25	.57	75
MR300/210	213/215TC	11.81	6.50	9.00	8.500	7.25	.57	75
MR300/250	254/256TC	11.81	6.50	9.00	8.500	7.25	.57	75
MR300/280	284/286TC	11.81	6.50	11.13	10.500	9.00	.57	75

Part No. Example

Food Duty Unit
143TC Frame Motor Adapter
and 1⁷/₁₆ Bushing Bore

**K303WG0650 MR160/140F
WFB3-107**

Beverage Duty Unit

**K303WG0650 MR160/140B
WFB3-107**

Also available in Housing Styles
"N" and "GD".

Table No. 3 "WFB" – Double Bushings – Metric

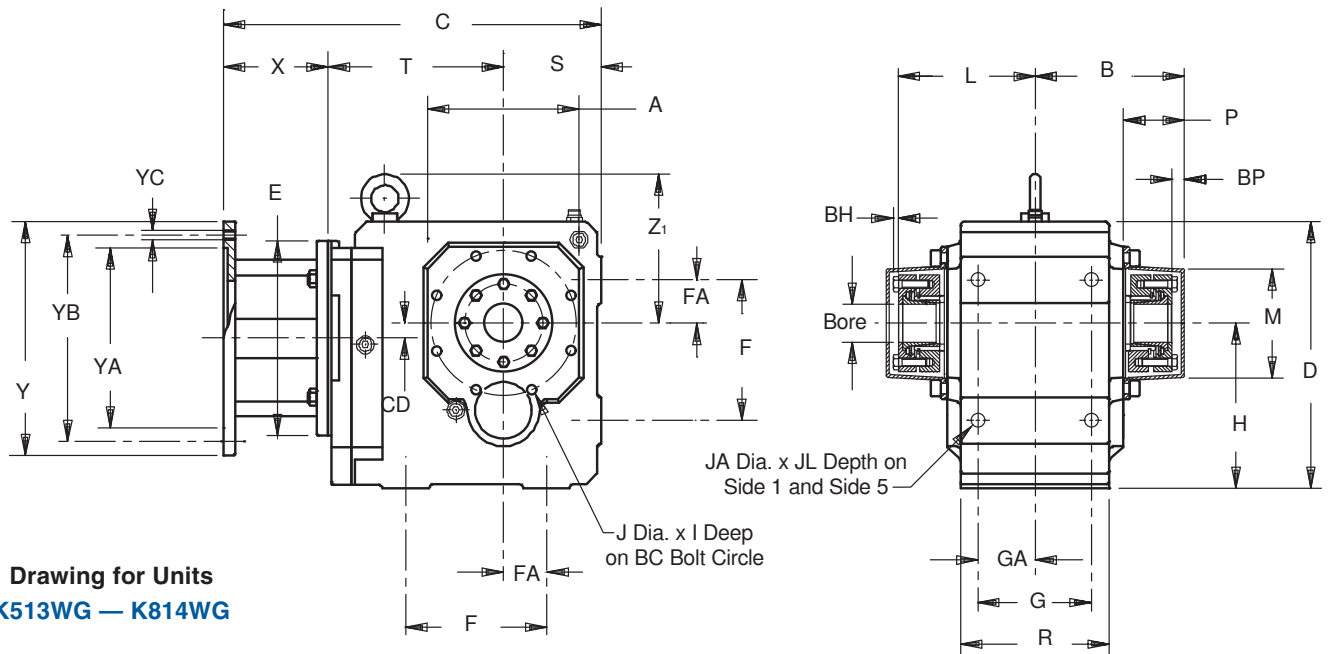
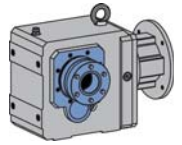
Unit	Stock Bore Sizes — mm			
	25	30	35	40
K1	WFB1-25	—	—	—
K2	WFB2-25	WFB2-30	—	—
K3	—	WFB3-30	WFB3-35	—
K4	—	—	—	WFB4-40
K5	—	—	—	WFB5-40
K6	—	—	—	WFB6-40

Table No. 4 "WFB" Double Side Bushings – Inches

Unit	Stock Bore Sizes						
	3/4	1	1 ³ / ₁₆	1 ¹ / ₄	1 ³ / ₈	1 ⁷ / ₁₆	1 ¹ / ₂
KL2	WFBKL2-012	WFB1-100	—	—	—	—	—
K1	—	WFB1-100	—	—	—	—	—
K2	—	WFB2-100	WFB2-103	—	—	—	—
K3	—	WFB3-100	WFB3-103	WFB3-104	WFB3-106	WFB3-107	WFB3-108
K4	—	WFB4-100	WFB4-103	WFB4-104	WFB4-106	WFB4-107	WFB4-108



Food and Beverage Duty "K" Series – MGS Reducer Tapped Hole – "G" Housing – Double Bushing



**Drawing for Units
K513WG — K814WG**

Table No. 5 "K" Series – Double Wobble Free – Unit Dimensions (Inches)

Base Module	ML2R050			MR140/050			MR160/140 ¹⁾			MR200/180			MR250/210 ²⁾			MR300/250 ³⁾			Wt. lbs.
	CD	C	T	CD	C	T	CD	C	T	CD	C	T	CD	C	T	CD	C	T	
KL202	0	5.64	3.48	—	—	—	—	—	—	—	—	—	—	—	—	—	—	—	12
K102	—	—	—	1.42	10.55	4.88	1.42	11.26	5.04	—	—	—	—	—	—	—	—	—	31
K202	—	—	—	1.81	11.50	5.63	1.81	12.21	5.79	1.81	13.23	5.87	—	—	—	—	—	—	40
K203	—	—	—	1.81	12.96	7.09	—	—	—	—	—	—	—	—	—	—	—	—	53
K302	—	—	—	2.07	12.68	6.42	2.07	13.38	6.57	2.07	14.40	6.65	—	—	—	—	—	—	67
K303	—	—	—	2.07	14.13	7.87	.63	15.08	8.27	—	—	—	—	—	—	—	—	—	73
K402	—	—	—	—	—	—	2.36	14.76	7.36	2.36	15.74	7.44	2.36	16.41	7.56	—	—	—	93
K403	—	—	—	2.36	15.51	8.66	.91	16.46	9.06	—	—	—	—	—	—	—	—	—	100
K513	—	—	—	—	—	—	.59	14.57	6.77	.59	15.59	6.85	.59	16.22	6.97	—	—	—	106
K514	—	—	—	—	—	—	.59	16.26	8.46	—	—	—	—	—	—	—	—	—	109
K613	—	—	—	—	—	—	.71	16.10	7.52	.71	17.12	7.60	.71	17.75	7.72	.71	19.49	8.27	170
K614	—	—	—	—	—	—	.71	17.79	9.21	—	—	—	—	—	—	—	—	—	177
K713	—	—	—	—	—	—	—	—	—	.79	18.42	8.70	.79	19.05	8.82	.79	20.75	9.33	221
K714	—	—	—	—	—	—	.79	19.13	10.35	.79	20.86	11.14	—	—	—	—	—	—	234
K813	—	—	—	—	—	—	—	—	—	.94	20.23	9.72	.94	20.82	9.80	.94	22.52	10.31	309
K814	—	—	—	—	—	—	—	—	—	.94	22.64	12.13	—	—	—	—	—	—	331

¹⁾ Also available as **MR160/050** for a NEMA 56C frame motor.

²⁾ Also available as **MR250/180** for a NEMA 182/184TC frame motor.

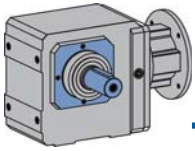
³⁾ Also available as **MR300/180** for NEMA 182/184TC, **MR300/210** for NEMA 213/215TC, and **MR300/280** for NEMA 284/286TC frame motor.

All weights are approximate.

NOTE: A double side bushing kit includes 2 each of a pressure ring and clamp ring, flanged and tapered cone, and all hardware to mount the kit into the reducer. The WFB1 does not use a tapered cone. All double bushing kits include covers. The bushing will accept a shaft with a tolerance of +.000/-.005.

Table No. 6 "WFB" Double Side Bushings – Inches

Unit	Stock Bores Sizes — Inches											
	1 ⁷ / ₁₆	1 ¹ / ₂	1 ⁵ / ₈	1 ¹¹ / ₁₆	1 ³ / ₄	1 ⁷ / ₈	1 ¹⁵ / ₁₆	2	2 ³ / ₁₆	2 ³ / ₈	2 ⁷ / ₁₆	2 ³ / ₄
K5	WFB5-107	WFB5-108	WFB5-110	WFB5-111	WFB5-112	WFB5-114	WFB5-115	WFB5-200	—	—	—	—
K6	WFB6-107	WFB6-108	WFB6-110	WFB6-111	WFB6-112	—	WFB6-115	WFB6-200	WFB6-203	—	—	—
K7	—	—	—	—	—	—	WFB7-115	WFB7-200	WFB7-203	WFB7-206	—	—
K8	—	—	—	—	—	—	—	—	WFB8-203	WFB8-206	WFB7-207	WFB8-212



Food and Beverage Duty "K" Series – MGS Reducer Tapped Holes – "G" Housing – Shaft Output

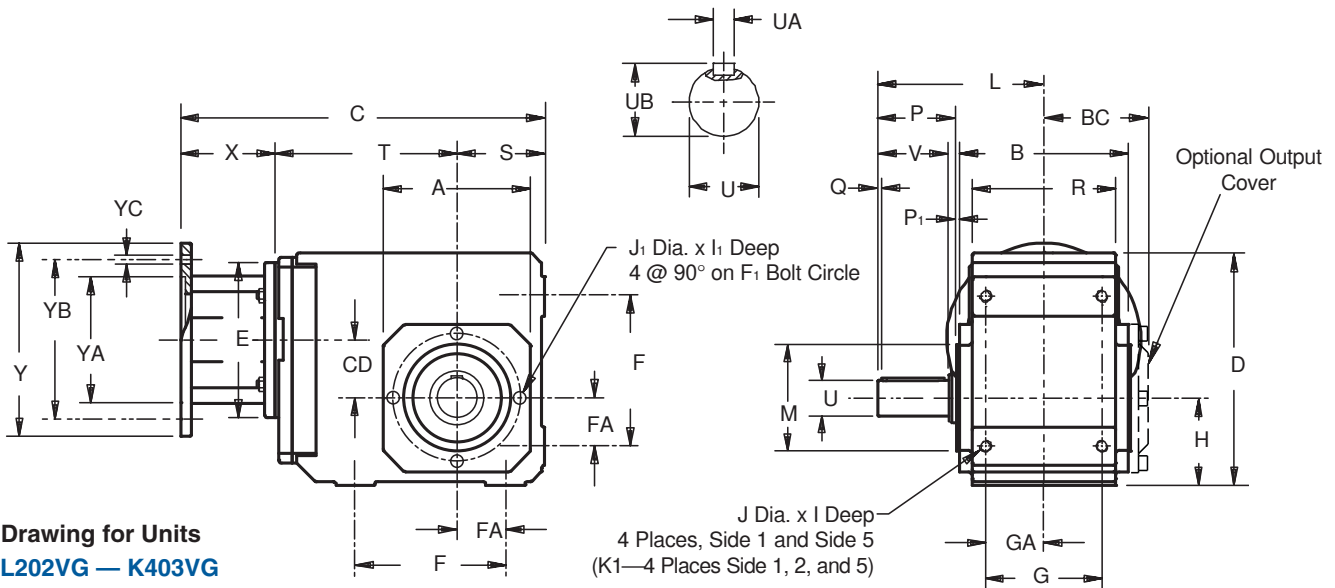


Table No. 1 "K" Series – Unit Dimensions (Inches) – "G" Housing Style

Base Module	A	B	BC	D	F	F ₁	FA	G	GA	H	I	I ₁	J	J ₁	L
KL202	3.80	3.85	—	4.25	5.90	2.95	1.08	2.16	1.28	2.56	.43	.43	M6×1	M6×1	3.66
K102	4.13	4.17	2.64	6.30	3.54	3.54	1.18	2.76	1.38	2.36	.51	.51	M8×1.25	M8×1.25	4.53
K202/203	4.57	5.28	3.23	7.48	4.53	3.94	1.38	3.54	1.77	2.56	.63	.51	M10×1.5	M8×1.25	5.31
K302/303	5.20	5.75	3.46	8.39	5.12	4.53	1.57	4.13	2.07	2.95	.63	.51	M10×1.5	M8×1.25	5.59
K402/403	5.98	6.81	4.08	9.45	6.10	5.12	1.97	4.72	2.36	3.54	.75	.63	M12×1.75	M10×1.5	6.93
K513/514	5.71	7.28	4.31	10.24	5.51	5.12	1.57	4.92	2.46	6.30	1.02	.63	M16×2.0	M10×1.5	8.74
K613/614	7.09	7.87	4.61	12.20	6.30	6.50	1.97	5.12	2.56	7.48	1.02	.63	M16×2.0	M10×1.5	9.29
K713/714	7.68	8.90	5.08	13.46	7.09	7.28	2.17	5.71	2.85	8.35	1.22	.75	M20×2.5	M12×1.75	10.91
K813/814	8.90	11.10	6.26	16.14	9.45	8.46	2.95	7.28	3.64	10.43	1.50	.75	M24×3.0	M12×1.75	12.83

Table No. 2

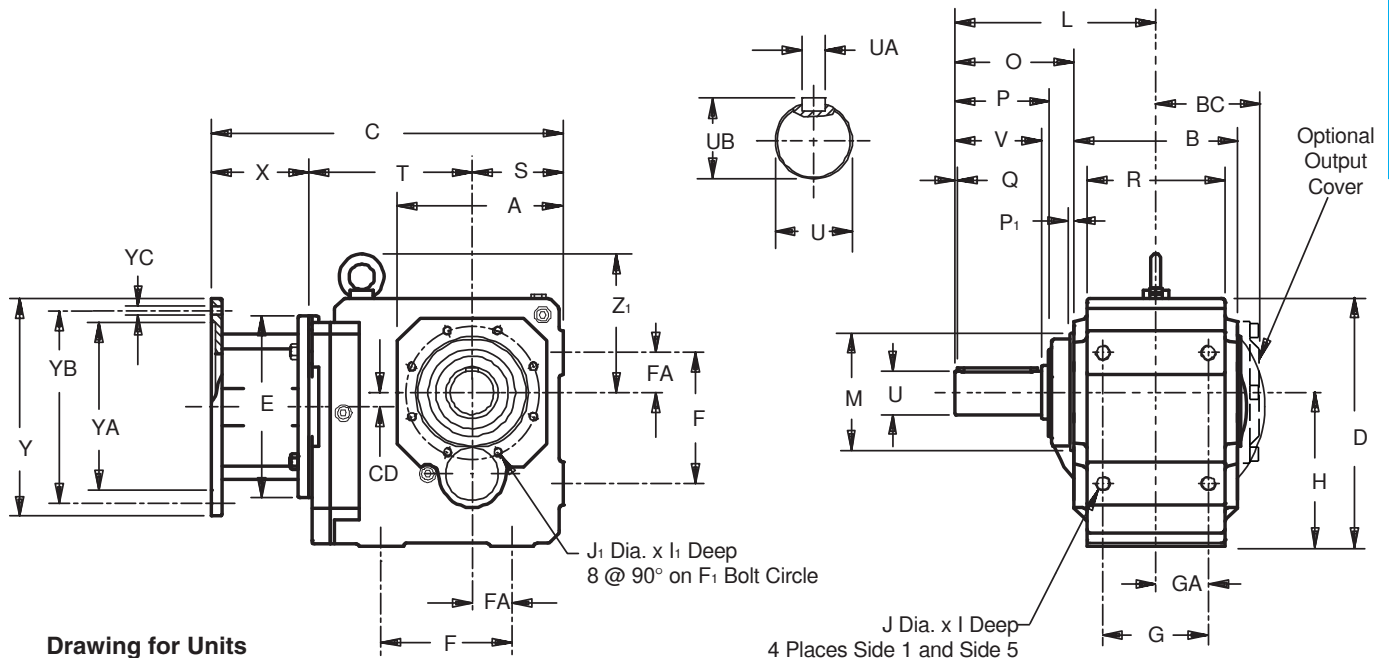
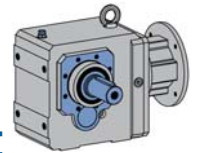
Base Module	M	O	P	P ₁	R	Q	S	U	UA—Key	UB	V	Z ₁
KL202	2.953	—	1.57	.16	3.62	.12	2.17	.750	$\frac{3}{16} \times \frac{3}{16} \times 1\frac{1}{4}$	1.11	1.57	—
K102	2.953	—	2.32	.12	3.54	.16	2.36	1.000	$\frac{1}{4} \times \frac{1}{4} \times 1\frac{9}{16}$	1.11	1.97	—
K202/203	3.228	—	2.56	.12	4.53	.16	2.56	1.250	$\frac{1}{4} \times \frac{1}{4} \times 1\frac{15}{16}$	1.36	2.36	—
K302/303	3.740	—	2.60	.12	5.12	.16	2.95	1.250	$\frac{1}{4} \times \frac{1}{4} \times 1\frac{15}{16}$	1.36	2.36	—
K402/403	4.331	—	3.39	.14	5.83	.16	3.54	1.375	$\frac{5}{16} \times \frac{5}{16} \times 2\frac{5}{16}$	1.51	2.76	—
K513/514	4.331	5.10	3.90	.14	6.30	.16	3.94	1.750	$\frac{3}{8} \times \frac{3}{8} \times 3\frac{5}{32}$	1.92	3.54	5.98
K613/614	5.512	5.35	4.31	.14	6.61	.16	4.72	1.750	$\frac{3}{8} \times \frac{3}{8} \times 3\frac{5}{32}$	1.92	3.94	6.77
K713/714	6.102	6.46	5.14	.14	7.48	.16	4.92	2.375	$\frac{5}{8} \times \frac{5}{8} \times 3\frac{15}{16}$	2.65	4.72	7.52
K813/814	7.283	7.28	5.94	.16	9.25	.20	5.71	2.875	$\frac{3}{4} \times \frac{3}{4} \times 4\frac{5}{16}$	3.21	5.51	8.11

Table No. 2 Motor Adapter Dimensions (Inches)

Motor Adapter	NEMA C-Flange	E	X	Y	YA	YB	YC	Wt. lbs.
ML2R050	56C	5.51	2.99	6.50	4.500	5.87	.41	7
MR140/050	56C	5.51	3.31	6.50	4.500	5.87	.41	9
MR160/050	56C	6.30	3.86	6.50	4.500	5.87	.41	16
MR160/140	143/145TC	6.30	3.86	6.50	4.500	5.87	.41	16
MR200/180	182/184TC	7.87	4.80	9.00	8.500	7.25	.55	23
MR250/180	182/184TC	9.84	5.31	9.00	8.500	7.25	.55	36
MR250/210	213/215TC	9.84	5.31	9.00	8.500	7.25	.55	36
MR300/180	182/184TC	11.81	6.50	9.00	8.500	7.25	.57	75
MR300/210	213/215TC	11.81	6.50	9.00	8.500	7.25	.57	75
MR300/250	254/256TC	11.81	6.50	9.00	8.500	7.25	.57	75
MR300/280	284/286TC	11.81	6.50	11.13	10.500	9.00	.57	75



Food and Beverage Duty "K" Series – MGS Reducer Tapped Holes – "G" Housing – Shaft Output



Drawing for Units
K513VG — K814VG

Table No. 4 "K" Series – Double Wobble Free – Unit Dimensions (Inches)

Base	ML2R050			MR140/050			MR160/140 ¹⁾			MR200/180			MR250/210 ²⁾			MR300/250 ³⁾			Wt. lbs.
	CD	C	T	CD	C	T	CD	C	T	CD	C	T	CD	C	T	CD	C	T	
KL202	0	5.64	3.48	—	—	—	—	—	—	—	—	—	—	—	—	—	—	—	12
K102	—	—	—	1.42	10.55	4.88	1.42	11.26	5.04	—	—	—	—	—	—	—	—	—	31
K202	—	—	—	1.81	11.50	5.63	1.81	12.21	5.79	1.81	13.23	5.87	—	—	—	—	—	—	40
K203	—	—	—	1.81	12.96	7.09	—	—	—	—	—	—	—	—	—	—	—	—	53
K302	—	—	—	2.07	12.68	6.42	2.07	13.38	6.57	2.07	14.40	6.65	—	—	—	—	—	—	67
K303	—	—	—	2.07	14.13	7.87	.63	15.08	8.27	—	—	—	—	—	—	—	—	—	73
K402	—	—	—	—	—	—	2.36	14.76	7.36	2.36	15.74	7.44	2.36	16.41	7.56	—	—	—	93
K403	—	—	—	2.36	15.51	8.66	.91	16.46	9.06	—	—	—	—	—	—	—	—	—	100
K513	—	—	—	—	—	—	.59	14.57	6.77	.59	15.59	6.85	.59	16.22	6.97	—	—	—	106
K514	—	—	—	—	—	—	.59	16.26	8.46	—	—	—	—	—	—	—	—	—	109
K613	—	—	—	—	—	—	.71	16.10	7.52	.71	17.12	7.60	.71	17.75	7.72	.71	19.49	8.27	170
K614	—	—	—	—	—	—	.71	17.79	9.21	—	—	—	—	—	—	—	—	—	177
K713	—	—	—	—	—	—	—	—	—	.79	18.42	8.70	.79	19.05	8.82	.79	20.75	9.33	221
K714	—	—	—	—	—	—	.79	19.13	10.35	.79	20.86	11.14	—	—	—	—	—	—	234
K813	—	—	—	—	—	—	—	—	—	.94	20.23	9.72	.94	20.82	9.80	.94	22.52	10.31	309
K814	—	—	—	—	—	—	—	—	—	.94	22.64	12.13	—	—	—	—	—	—	331

¹⁾ Also available as MR160/050 for a NEMA 56C frame motor.

²⁾ Also available as MR250/180 for a NEMA 182/184TC frame motor.

³⁾ Also available as MR300/180 for a NEMA 182/184TC, MR300/210 for a NEMA 213/215TC, and MR300/280 for a NEMA 284/286TC frame motor.

All weights are approximate.

Part No. Example

Food Duty Unit
with 143TC Frame Motor Adapter and Output Shaft

K303VG0650 MR160/140F

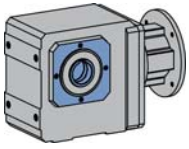
Specify: Shaft Side

Beverage Duty Unit

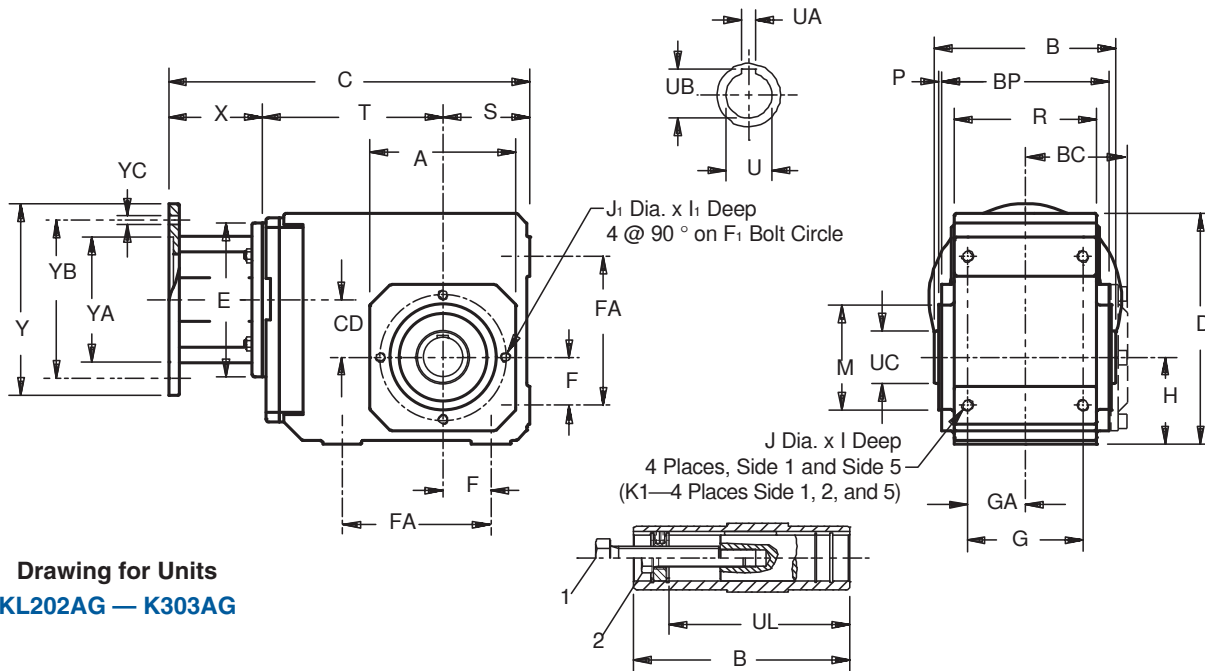
K303VG0650 MR160/140B

Specify: Shaft Side

Also available in Housing Styles "N", "F", and "GD".



Food and Beverage Duty "K" Series – MGS Reducers Tapped Hole – "G" Housing – Hollow Output



Drawing for Units
KL202AG – K303AG

Table No. 1 "K" Series – Unit Dimensions (Inches) – "G" Housing Style

Base Module	A	B	D	F	F ₁	G	H	I	I ₁	J	J ₁	M	P	R	S	BC	BP	FA	GA
KL202	3.80	4.17	4.25	2.16	2.95	2.56	2.16	.43	.43	M6×1	M6×1	2.953	.16	3.62	2.16	—	3.85	1.08	1.28
K102	4.13	4.72	6.30	3.54	3.54	2.76	2.36	.51	.51	M8×1.25	M8×1.25	2.953	.12	3.54	2.36	2.49	4.17	1.18	1.38
K202/203	4.57	5.83	7.48	4.53	3.94	3.54	2.56	.63	.51	M10×1.5	M8×1.25	3.228	.12	4.53	2.56	3.25	5.28	1.38	1.77
K302/303	5.20	6.30	8.39	5.12	4.53	4.13	2.95	.63	.51	M10×1.5	M8×1.25	3.740	.12	5.12	2.95	3.47	5.75	1.57	2.07

Table No. 2 Standard Bore (Inches)

Base Module	U	UA	UB	UC	UL	1
KL202	.750	.188	.84	1.18	3.13	³ / ₈ -16
K102	1.000	.250	1.12	1.57	3.86	¹ / ₂ -13
K202/203	1.250	.250	1.37	1.77	4.78	¹ / ₂ -13
K302/303	1.250	.250	1.37	1.97	4.92	⁵ / ₈ -11
	1.375	.312	1.52	1.97	4.92	⁵ / ₈ -11

1. Removal Bolt – not supplied.
 2. Mounting Bolt – must be smaller than removal bolt.
- All weights are approximate.

Table No. 3 Motor Adapter Dimensions (Inches)

Motor Adapter	NEMA C-Flange	E	X	Y	YA	YB	YC	Wt. lbs.
ML2R050	56C	5.51	2.99	6.50	4.500	5.87	.41	7
MR140/050	56C	5.51	3.31	6.50	4.500	5.87	.41	9
MR160/050	56C	6.30	3.86	6.50	4.500	5.87	.41	16
MR160/140	143/145TC	6.30	3.86	6.50	4.500	5.87	.41	16
MR200/180	182/184TC	7.87	4.80	9.00	8.500	7.25	.55	23

Table No. 4 "K" Series – Unit Dimensions (Inches)

Base Module	ML2R050			MR140/050			MR160/140 ¹⁾			MR200/180			Wt. lbs.
	CD	C	T	CD	C	T	CD	C	T	CD	C	T	
KL202	0	5.64	3.48	—	—	—	—	—	—	—	—	—	12
K102	—	—	—	1.42	10.55	4.88	1.42	11.26	5.04	—	—	—	31
K202	—	—	—	1.81	11.50	5.63	1.81	12.21	5.79	1.81	13.23	5.87	40
K302	—	—	—	1.81	12.96	7.09	—	—	—	—	—	—	53
K302	—	—	—	2.07	12.68	6.42	2.07	13.38	6.57	2.07	14.40	6.65	67
K303	—	—	—	2.07	14.13	7.87	.63	15.08	8.27	—	—	—	73

¹⁾ Also available as MR160/050 for a NEMA 56C frame motor.

Part No. Example

Food Duty
Tapped Holes Housing and Hollow Output

K303AG0650 MR160/140F
Specify Bore Size (K3 ONLY)

Beverage Duty
K303AG0650 MR160/140B
Specify Bore Size (K3 ONLY)

Also available in Housing Styles "N" and "F".



"K" Series Food Duty hollow output units have bore sizes designed specifically for the poultry industry.