



Food and Beverage Duty "F" Series – MGS Reducer Tapped Hole – "G" Housing – Hollow Output

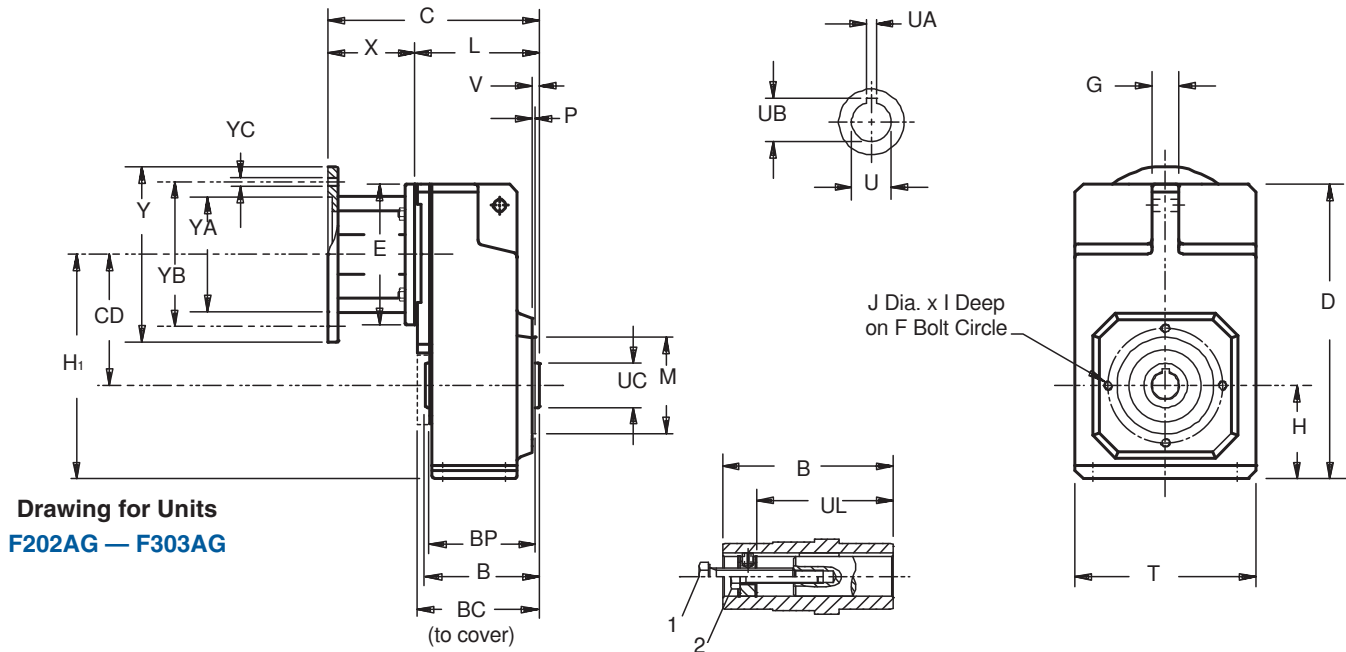


Table No. 1 "F" Series – Unit Dimensions (Inches) – "G" Housing Style

Base Module	CD	B	D	F	G	H	H ₁	I	J	M	P	T	U	V	BC	BP	UA	UB	UC	UL	1
F2	5.16	4.53	11.77	4.53	.87	3.66	8.82	.51	M8x1.25	3.740	.12	7.09	1.000	.31	4.76	4.13	.250	1.12	1.77	3.62	1/2-13
F3	5.89	5.12	13.23	5.12	1.18	4.17	10.06	.63	M10x1.5	4.331	.14	8.11	1.250	.33	5.45	4.72	.250	1.37	1.97	4.06	1/2-13

Table No. 2 "F" Series – Unit Dimensions (Inches)

Motor Adapter	NEMA C-Flange	E	X	Y	YA	YB	YC	Wt. lbs.
MR140/050	56C	5.51	3.31	6.50	4.500	5.87	.41	9
MR160/050	56C	6.30	3.86	6.50	4.500	5.87	.41	16
MR160/140	143/145TC	6.30	3.86	6.50	4.500	5.87	.41	16
MR200/180	182/184TC	7.87	4.80	9.00	8.500	7.25	.55	23

Table No. 3 "F" Series Unit Dimensions (Inches)

Base Module	MR140/050		MR160/140 ¹⁾		MR200/180		Approx. Wt. lbs.
	C	L	C	L	C	L	
F202	8.15	4.84	8.86	5.00	9.88	5.08	51
F203	9.61	6.30	—	—	—	—	64
F302	8.74	5.43	9.45	5.59	10.47	5.67	67
F303	10.20	6.89	—	—	—	—	73

¹⁾ Also available as **MR160/050** for a NEMA 56C frame motor.

Part No. Example

Food Duty Unit
Tapped Hole Housing with Motor Adapter

F302AG0560 MR160/140F

Beverage Duty Unit

F302AG0560 MR160/140B

Also available in Housing Styles "N" and "F".

1. Removal Bolt – not supplied.
 2. Mounting Bolt – must be smaller than removal bolt.
- All weights are approximate.