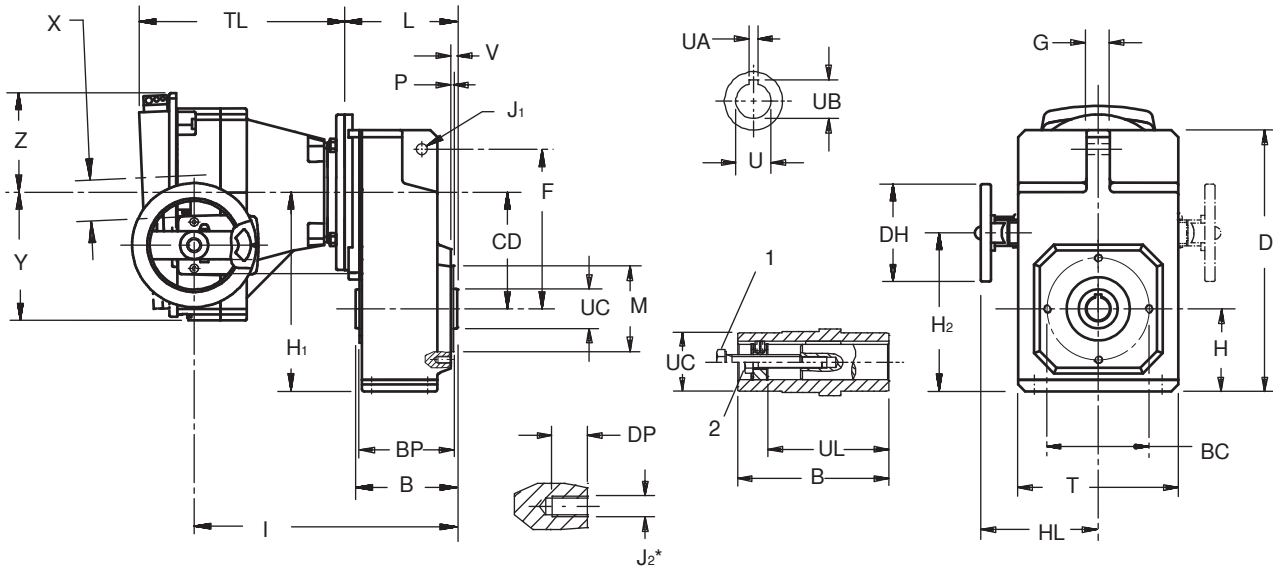




"F" Series – MGS® Adjustable Speed Drives Dimensional Data



Drawing for Units
F102AG – F603AG

Part No. Example
Basic Unit with ComTrac
F302AG0620 TD270K140

Table No. 1 "F" Series – Tapped Holes Unit Dimensions (Inches) – "G" Housing Style

Base Module	CD	B	D	F	G	H	H ₁	J ₁	J ₂ *	M	Tolerance	P	T	V	BC	BP	DP
F102	4.02	3.74	9.37	5.91	.79	2.91	6.93	.43	M8	2.756	+0.007/-0.0005	.10	5.71	.26	3.35	3.43	.51
F202/F203	5.16	4.53	11.77	7.13	.87	3.66	8.82	.43	M8	3.740	+0.007/-0.0005	.12	7.09	.31	4.53	4.13	.51
F302/F303	5.89	5.12	13.23	8.07	1.18	4.17	10.06	.55	M10	4.331	+0.007/-0.0005	.14	8.11	.33	5.12	4.72	.63
F402/F403	6.65 ¹⁾	5.71	14.57	8.98	1.18	4.57	11.22	.55	M10	4.331	+0.007/-0.0005	.14	9.06	.33	5.12	5.31	.63
F602/F603	7.72	7.09	17.64	10.63	1.38	5.39	13.11	.87	M10	5.118	+0.008/-0.0006	.14	10.43	.41	6.50	6.54	.63

* F602 and F603 has 8 tapped holes instead of 4 as shown on drawing.

¹⁾ "CD" is 5.20 for a F403 with TD27.

Table No. 2 "F" Series Bore Dimensions (Inches)

Base Module	U	Tolerance	UA	UB	UC	UL	1
F102	.750	+0.008/-0.0000	.187	.84	1.38	2.87	3/8-16
F202	1.000	+0.008/-0.0000	.250	1.12	1.77	3.62	1/2-13
F302	1.250	+0.010/-0.0000	.250	1.37	1.97	4.06	1/2-13
F402/F403	1.500	+0.010/-0.0000	.375	1.67	2.17	4.49	3/4-10
F602/F603	2.000	+0.012/-0.0000	.500	2.23	2.76	5.63	3/4-10

1. Removal Bolt – not supplied.

2. Mounting Bolt – must be smaller than removal bolt.

All weights are approximate.

Table No. 3 "F" Series – Unit Dimensions (Inches)

ComTrac Part No.	NEMA C-Flange	DH	HL	TL	X	Y	Z
TD270K050	56C	4.92	5.67	7.87	2.09	5.55	4.41
TD270K140	143/145TC	4.92	5.67	7.87	2.09	5.55	4.41
TD370K140	143/145TC	4.92	5.91	8.50	2.17	5.67	4.37
TD470K180	182/184TC	6.30	6.81	8.94	2.80	7.20	5.59
TD570K180	182/184TC	7.87	8.31	11.89	3.11	8.11	6.30
TD670K210	213/215TC	7.87	9.17	12.17	3.86	9.02	7.13

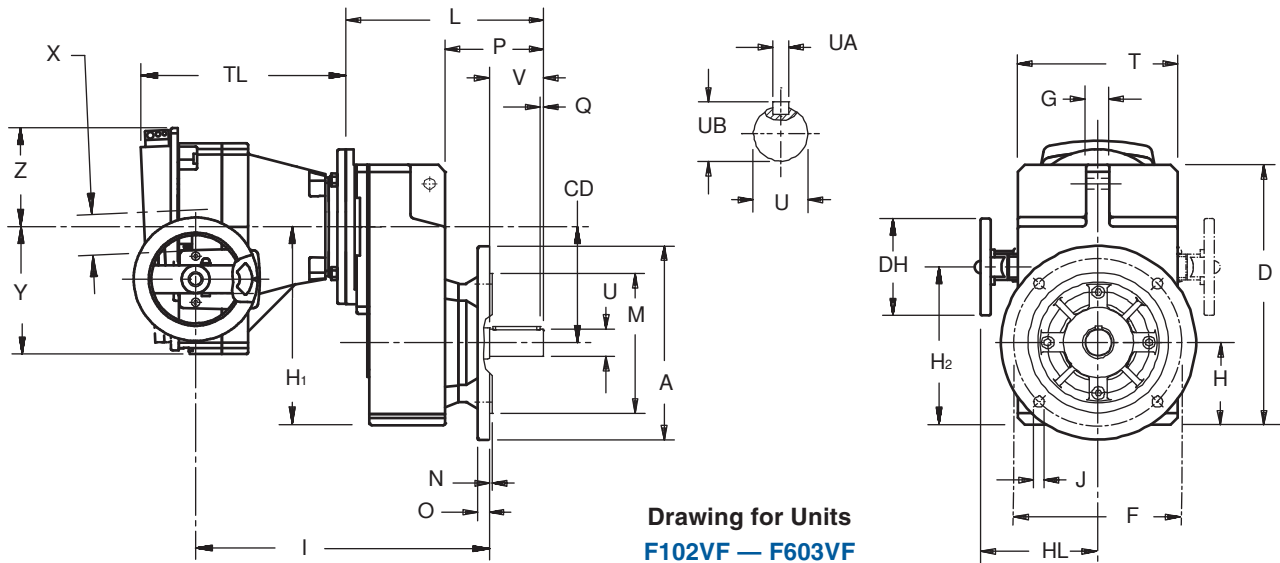
Table No. 4 "F" Series – Unit Dimensions (Inches)

Base Module	TD270K050 ⁽²⁾			Wt. lbs.	TD370K140			Wt. lbs.	TD470K180			Wt. lbs.	TD570K180			Wt. lbs.	TD670K210			Wt. lbs.
	H ₂	I	L		H ₂	I	L		H ₂	I	L		H ₂	I	L		H ₂	I	L	
F102	5.35	10.43	4.25	71	4.88	11.10	4.25	89	—	—	—	—	—	—	—	—	—	—	—	
F202	7.24	11.18	5.08	84	6.77	11.85	5.08	102	6.22	11.97	5.08	110	—	—	—	—	—	—	—	
F302	8.48	11.77	5.67	100	8.01	12.52	5.67	118	7.46	12.56	5.67	126	6.20	15.20	5.67	155	—	—	—	
F402	9.65	12.36	6.38	117	9.17	13.03	6.38	135	8.62	13.15	6.38	143	7.87	15.79	6.38	172	7.68	16.10	6.38	214
F403	8.19	14.06	7.87	124	—	—	—	—	—	—	—	—	—	—	—	—	—	—	—	
F602	11.54	13.85	7.48	198	11.06	14.33	7.68	216	10.51	14.45	7.68	224	9.76	17.09	7.68	253	9.57	17.40	7.68	295
F603	11.54	15.35	9.17	210	11.06	16.02	9.17	228	—	—	—	—	—	—	—	—	—	—	—	

⁽²⁾ Also available for a NEMA 143TC frame motor.



"F" Series – MGS® Adjustable Speed Drives Dimensional Data



Part No. Example
Basic Unit with ComTrac
F302VF0620 TD270K140

Table No. 1 "F" Series – Round Flange Dimensions (Inches) – "F" Housing Style

Base Module	CD	A	D	F	G	H	H ₁	J	M	Tolerance	N	O	P	Q	T	V
F102	4.02	6.30	9.37	5.12	.79	2.91	6.93	.35	4.331	+0.008/-0.006	.14	.39	3.80	.16	5.71	1.97
F202/F203	5.16	7.87	11.77	6.50	.87	3.66	8.82	.43	5.118	+0.008/-0.006	.14	.55	4.53	.16	7.09	2.36
F302/F303	5.89	9.84	13.23	8.46	1.18	4.17	10.06	.55	7.087	+0.008/-0.006	.16	.59	5.10	.16	8.11	2.76
F402/F403	6.65 ¹⁾	9.84	14.57	8.46	1.18	4.57	11.22	.55	7.087	+0.008/-0.006	.16	.59	5.49	.16	9.06	3.15
F602/F603	7.72	11.81	17.64	10.43	1.38	5.39	13.11	.55	9.055	+0.012/-0.008	.16	.67	6.44	.20	10.43	3.94

¹⁾ "CD" is 5.20 for a F403 with TD27.

Table No. 2 "F" Series Shaft Dimensions (Inches)

Base Module	U	Tolerance	UA—Key	UB
F102	1.000	+0.000/-0.0006	1/4 × 1/4 × 1 ⁹ / ₁₆	1.11
F202	1.250	+0.000/-0.0007	1/4 × 1/4 × 1 ¹⁵ / ₁₆	1.36
F302	1.375	+0.000/-0.0007	5/16 × 5/16 × 2 ⁵ / ₁₆	1.51
F402/F403	1.625	+0.000/-0.0007	3/8 × 3/8 × 2 ⁷ / ₈	1.79
F602/F603	2.125	+0.000/-0.0008	1/2 × 1/2 × 3 ⁵ / ₃₂	2.35

Table No. 3 "F" Series – Unit Dimensions (Inches)

ComTrac Part No.	NEMA C-Flange	DH	HL	TL	X	Y	Z
TD270K050	56C	4.92	5.67	7.87	2.09	5.55	4.41
TD270K140	143/145TC	4.92	5.67	7.87	2.09	5.55	4.41
TD370K140	143/145TC	4.92	5.91	8.50	2.17	5.67	4.37
TD470K180	182/184TC	6.30	6.81	8.94	2.80	7.20	5.59
TD570K180	182/184TC	7.87	8.31	11.89	3.11	8.11	6.30
TD670K210	213/215TC	7.87	9.17	12.17	3.86	9.02	7.13

Table No. 4 "F" Series – Unit Dimensions (Inches)

Base Module	TD270K050 ⁽²⁾			Wt. lbs.	TD370K140			Wt. lbs.	TD470K180			Wt. lbs.	TD570K180			Wt. lbs.	TD670K210			Wt. lbs.
	H ₂	I	L		H ₂	I	L		H ₂	I	L		H ₂	I	L		H ₂	I	L	
F102	5.35	11.46	7.24	71	4.88	12.13	7.24	89	—	—	—	—	—	—	—	—	—	—	—	
F202	7.24	12.44	8.54	84	6.77	13.11	8.54	102	6.22	13.15	8.62	110	—	—	—	—	—	—	—	
F302	8.48	13.11	9.61	100	8.01	13.78	9.61	118	7.46	13.81	9.69	126	6.20	16.45	9.69	155	—	—	—	
F402	9.65	13.82	10.59	117	9.17	14.49	10.59	135	8.62	14.53	10.67	143	7.87	17.17	10.67	172	7.68	17.36	10.79	214
F403	8.19	15.31	12.28	124	—	—	—	—	—	—	—	—	—	—	—	—	—	—	—	
F602	11.54	15.03	12.60	198	11.06	15.75	12.60	216	10.51	15.71	12.68	224	9.76	18.39	12.68	253	9.57	18.58	12.80	295
F603	11.54	15.35	14.29	210	11.06	16.02	14.29	228	—	—	—	—	—	—	—	—	—	—	—	

⁽²⁾ Also available for a NEMA 143TC frame motor.
All weights are approximate.