

Food and Beverage Duty "C" Series – MGS Reducer Foot Mount – "N" Housing

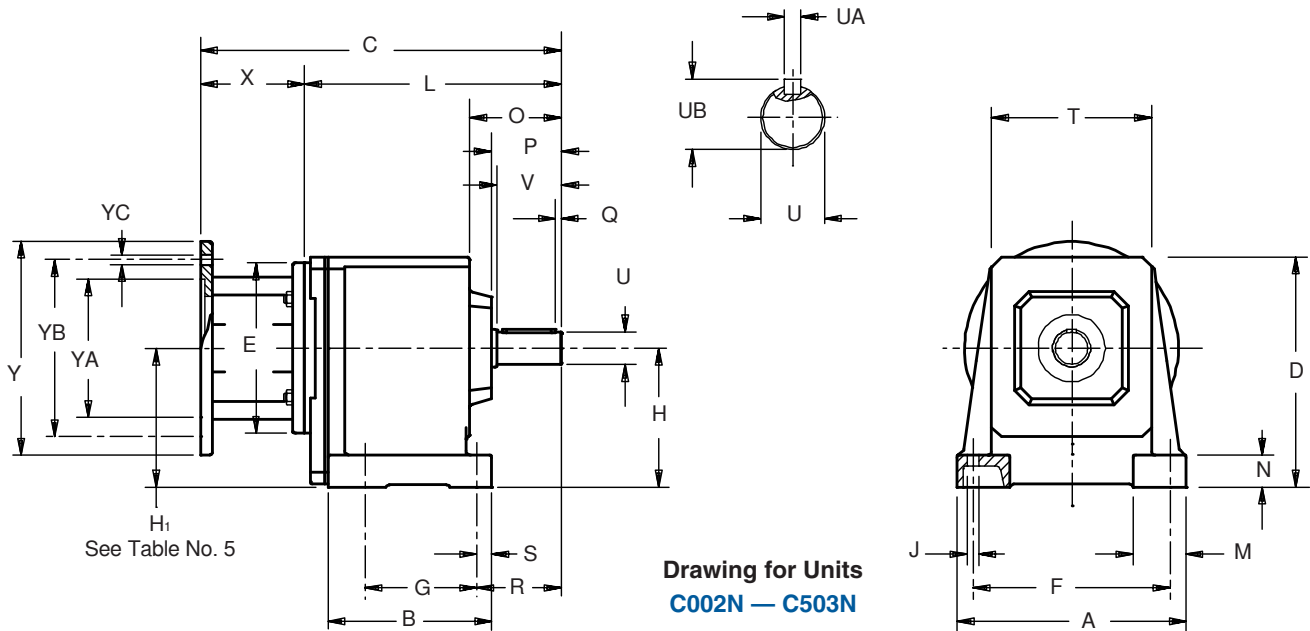


Table No. 1 "C" Series – Foot Mounting Unit Dimensions (Inches) – "N" Housing Style

Base Module	A	B	D	F	G	H	J	M	N	O	P	Q	R
C002	5.20	3.74	5.67	4.33	2.44	3.23	.28	1.38	.79	2.24	1.73	.16	2.17
C102/C103	6.93	4.65	6.97	5.91	2.76	4.02	.35	1.65	.98	2.72	2.13	.16	2.64
C202/C203	7.87	5.31	7.68	6.69	3.35	4.53	.43	1.97	1.18	3.39	2.56	.16	3.11
C302/C303	8.46	6.06	8.46	7.28	4.13	5.12 ¹⁾	.43	1.97	1.18	3.35	2.56	.16	3.11
C402/C403	10.04	7.09	9.65	8.66	4.33	5.71	.55	2.36	1.38	4.17	3.39	.16	4.13
C502/C503	11.42	7.76	11.42	9.65	5.12	6.69	.71	2.76	1.57	4.21	3.39	.16	4.25
C612/C613	11.81	10.43	12.40	9.65	8.46	7.87 ¹⁾	.71	2.95	1.57	6.02	4.17	.20	5.12

¹⁾ See Table 5.

Table No. 2

Base Module	S	T	U	V	Z ₁	UA—Key	UB
C002	.43	3.62	.7500	1.57	—	$\frac{3}{16} \times \frac{3}{16} \times 1\frac{7}{32}$.83
C102/C103	.51	4.88	1.0000	1.97	—	$\frac{1}{4} \times \frac{1}{4} \times 1\frac{9}{16}$	1.11
C202/C203	.55	5.43	1.2500	2.36	—	$\frac{1}{4} \times \frac{1}{4} \times 1\frac{15}{16}$	1.36
C302/C303	.55	5.91	1.2500	2.36	—	$\frac{1}{4} \times \frac{1}{4} \times 1\frac{15}{16}$	1.36
C402/C403	.75	6.89	1.6250	3.15	—	$\frac{3}{8} \times \frac{3}{8} \times 2\frac{7}{8}$	1.79
C502/C503	.87	7.56	1.6250	3.15	—	$\frac{3}{8} \times \frac{3}{8} \times 2\frac{7}{8}$	1.79
C612/C613	.98	6.97	2.1250	3.94	6.57	$\frac{1}{2} \times \frac{1}{2} \times 3\frac{5}{32}$	2.35

Table No. 3

"C" Series – Foot Mounting Unit Dimensions (Inches) – "N" Housing Style

Motor Adapter	NEMA C-Flange	E	X	Y	YA	YB	YC	Wt. lbs.
MR140/050	56C	5.51	3.31	6.50	4.500	5.87	.41	9
MR160/050	56C	6.30	3.86	6.50	4.500	5.87	.41	16
MR160/140	143/145TC	6.30	3.86	6.50	4.500	5.87	.41	16
MR200/180	182/184TC	7.87	4.80	9.00	8.500	7.25	.55	23
MR250/180	182/184TC	9.84	5.31	9.00	8.500	7.25	.55	36
MR250/210	213/215TC	9.84	5.31	9.00	8.500	7.25	.55	36
MR300/180	182/184TC	11.81	6.50	9.00	8.500	7.25	.57	75
MR300/210	213/215TC	11.81	6.50	9.00	8.500	7.25	.57	75
MR300/250	254/256TC	11.81	6.50	9.00	8.500	7.25	.57	75
MR300/280	284/286TC	11.81	6.50	11.13	10.500	9.00	.57	75



Food and Beverage Duty "C" Series – MGS Reducer Foot Mount – "N" Housing

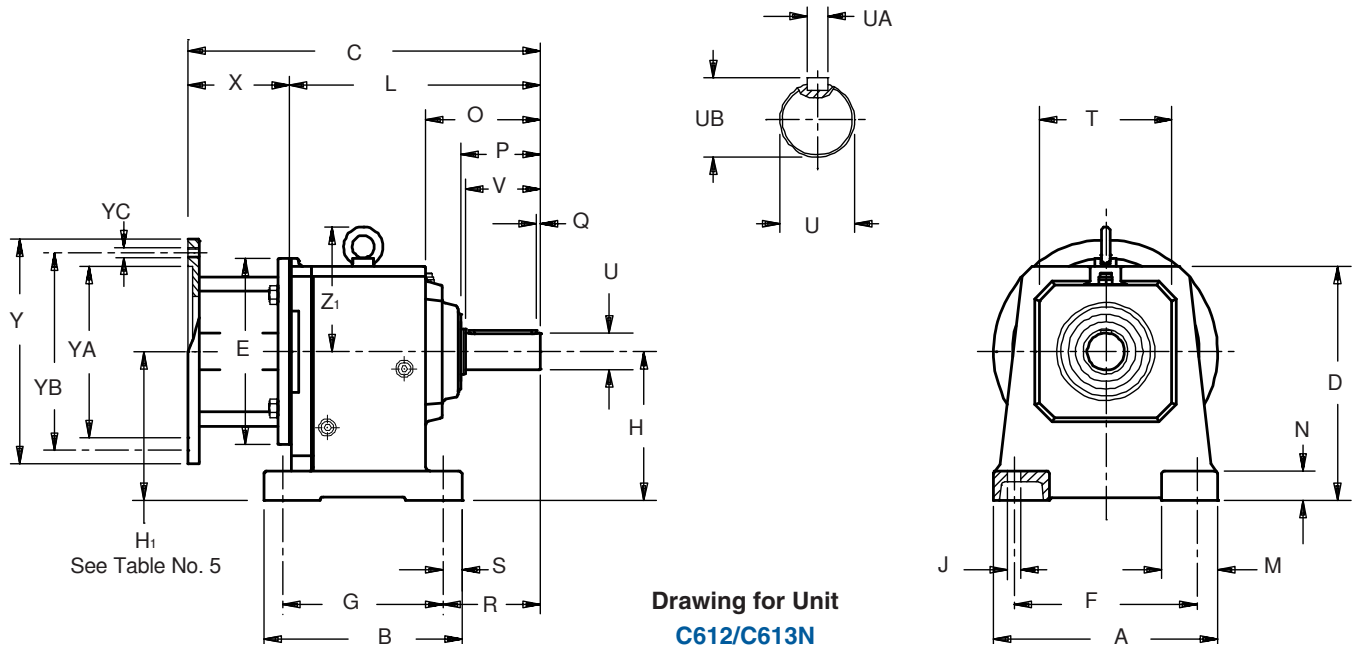
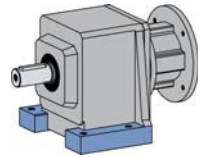


Table No. 4 "C" Series – Foot Mounting Unit Dimensions (Inches) – "N" Housing Style

Base Module	MR140/050		MR160/140 ²⁾		MR200/180		MR250/210 ³⁾		MR300/250 ⁴⁾		Approx. Wt. (lbs.)
	C	L	C	L	C	L	C	L	C	L	
C002	9.37	6.06	10.08	6.22	—	—	—	—	—	—	18
C102	10.67	7.36	11.38	7.52	12.40	7.60	—	—	—	—	29
C103	12.13	8.82	—	—	—	—	—	—	—	—	34
C202	11.77	8.46	12.48	8.62	13.50	8.70	—	—	—	—	38
C203	13.23	9.92	14.17	10.31	—	—	—	—	—	—	45
C302	—	—	13.23	9.37	14.25	9.45	14.88	9.57	—	—	49
C303	13.98	10.67	14.92	11.06	—	—	—	—	—	—	56
C402	—	—	15.12	11.26	16.14	11.34	16.77	11.46	—	—	71
C403	—	—	16.81	12.95	—	—	—	—	—	—	78
C502	—	—	15.95	12.09	16.97	12.17	17.59	12.28	19.33	12.83	95
C503	—	—	17.64	13.78	—	—	—	—	—	—	111
C612	—	—	—	—	17.91	13.11	18.54	13.23	20.24	13.74	115
C613	—	—	18.62	14.76	20.35	15.55	—	—	—	—	159

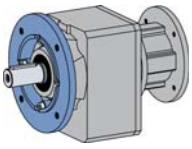
²⁾ Also available as **MR160/050** for a NEMA 56C frame motor. "H" dimension on the input side of a C303 with an MR160/050 or MR160/140 is 3.66.
³⁾ Also available as **MR250/180** for a NEMA 182/184TC frame motor.
⁴⁾ Also available as **MR300/180** for a NEMA 182/184TC, **MR300/210** for a NEMA 213/215TC, and **MR300/280** for a NEMA 284/286TC frame motor.
 All weights are approximate.

Table No. 5 "C" Series – Input Dimension (Inches)

Base Module	MR160/050 ²⁾	MR200/180	MR250/210	MR300/250
	H ₁	H ₁	H ₁	H ₁
C303	3.66	—	—	—
C612	—	7.63	7.63	7.63
C613	—	—	7.63	—

Part No. Example
 Food Duty Unit
 Foot Mounting with Motor Adapter
C302N0620 MR160/140F
 Beverage Duty Unit
C302N0620 MR160/140B

Also available in Housing Styles "G", "F", and "Q".



Food and Beverage Duty "C" Series – MGS Reducer Round Flange – "F" Housing

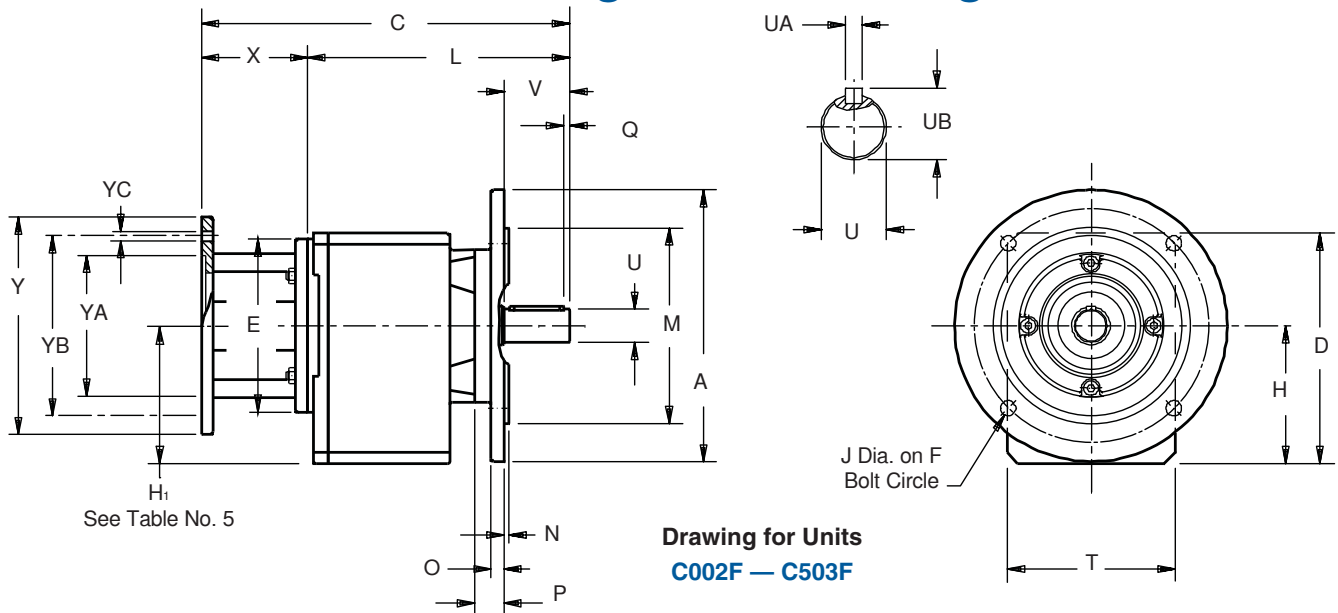


Table No. 1 "C" Series – Round Flange Unit Dimensions (Inches) – "F" Housing Style

Base Module	A ¹⁾	D	F	H	J	M	N	O	P	Q	T	V	Z ₁
C002	6.30	5.55	5.12	3.11	.35	4.331	.12	.39	.71	.16	3.82	1.57	—
C102/C103	7.87	6.89	6.50	3.94	.43	5.118	.14	.47	.83	.16	5.12	1.97	—
C202/C203	7.87	7.56	6.50	4.41	.43	5.118	.14	.47	1.06	.16	5.59	2.36	—
C302/C303	9.84	8.35	8.46	5.00 ²⁾	.55	7.087	.16	.47	1.06	.16	6.06	2.36	—
C402/C403	9.84	9.55	8.46	5.61	.55	7.087	.16	.55	1.10	.16	7.01	3.15	—
C502/C503	11.81	11.26	10.43	6.54	.55	9.055	.16	.63	1.14	.16	7.68	3.15	—
C612/C613	11.81	11.97	10.43	7.44 ²⁾	.55	9.055	.16	.67	1.42	.20	8.86	3.94	6.57

¹⁾ See Page 74 for other available output flanges.

²⁾ See Table No. 5

* C912 and C913 have 8 mounting holes in the output flange instead of 4 as shown in the drawing.

Table No. 2 Metric output available on request

Base Module	Standard Shaft - inches			Optional Shaft - mm		
	U	UA	UB	U	UA	UB
C002	.750	$\frac{3}{16} \times \frac{3}{16} \times 1\frac{7}{32}$.83	20 _{k6}	A6x6x32	22.5
C102/C103	1.000	$\frac{1}{4} \times \frac{1}{4} \times 1\frac{9}{16}$	1.11	25 _{k6}	A8x7x40	28
C202/C203	1.250	$\frac{1}{4} \times \frac{1}{4} \times 1\frac{15}{16}$	1.36	30 _{k6}	A8x7X50	33
C302/C303	1.250	$\frac{1}{4} \times \frac{1}{4} \times 1\frac{15}{16}$	1.36	30 _{k6}	A8x7X50	33
C402/C403	1.625	$\frac{3}{8} \times \frac{3}{8} \times 2\frac{7}{8}$	1.79	40 _{k6}	A12x8X70	43
C502/C503	1.625	$\frac{3}{8} \times \frac{3}{8} \times 2\frac{7}{8}$	1.79	40 _{k6}	A12x8X70	43
C612/C613	2.125	$\frac{1}{2} \times \frac{1}{2} \times 3\frac{3}{32}$	2.35	50 _{k6}	A14x9x90	53.5

Table No. 3 Motor Adapter Dimensions (Inches)

Motor Adapter	NEMA C-Flange	E	X	Y	YA	YB	YC	Wt. lbs.
MR140/050	56C	5.51	3.31	6.50	4.500	5.87	.41	9
MR160/050	56C	6.30	3.86	6.50	4.500	5.87	.41	16
MR160/140	143/145TC	6.30	3.86	6.50	4.500	5.87	.41	16
MR200/180	182/184TC	7.87	4.80	9.00	8.500	7.25	.55	23
MR250/180	182/184TC	9.84	5.31	9.00	8.500	7.25	.55	36
MR250/210	213/215TC	9.84	5.31	9.00	8.500	7.25	.55	36
MR300/180	182/184TC	11.81	6.50	9.00	8.500	7.25	.57	75
MR300/210	213/215TC	11.81	6.50	9.00	8.500	7.25	.57	75
MR300/250	254/256TC	11.81	6.50	9.00	8.500	7.25	.57	75
MR300/280	284/286TC	11.81	6.50	11.13	10.500	9.00	.57	75



Food and Beverage Duty "C" Series – MGS Reducer Round Flange – "F" Housing

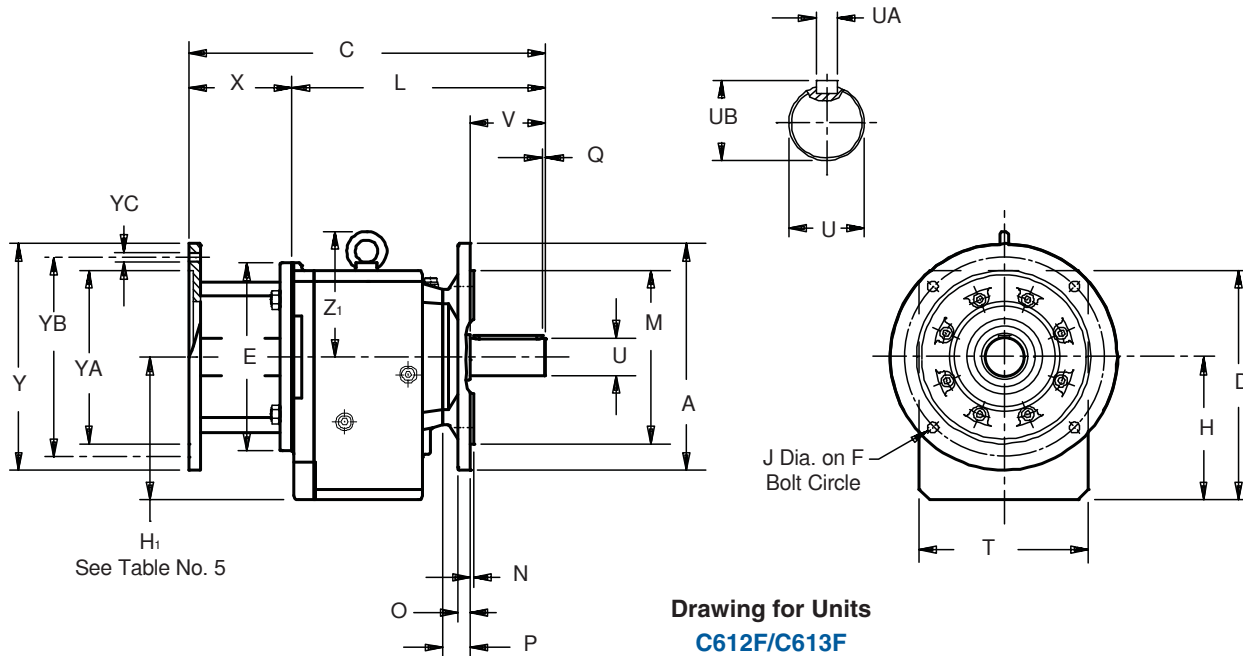
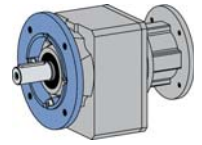


Table No. 4 "C" Series – Round Flange Unit Dimensions (Inches) – "F" Housing Style

Base Module	MR140/050		MR160/140 ²⁾		MR200/180		MR250/210 ³⁾		MR300/250 ⁴⁾		Approx. Wt.(lbs.)
	C	L	C	L	C	L	C	L	C	L	
C002	9.37	6.06	10.08	6.22	—	—	—	—	—	—	18
C102	10.67	7.36	11.38	7.52	12.40	7.60	—	—	—	—	29
C103	12.13	8.82	—	—	—	—	—	—	—	—	34
C202	11.77	8.46	12.48	8.62	13.50	8.70	—	—	—	—	38
C203	13.23	9.92	14.17	10.31	—	—	—	—	—	—	45
C302	—	—	13.23	9.37	14.25	9.45	14.88	9.57	—	—	49
C303	13.98	10.67	14.92	11.06	—	—	—	—	—	—	56
C402	—	—	15.12	11.26	16.14	11.34	16.77	11.46	—	—	71
C403	—	—	16.81	12.95	—	—	—	—	—	—	78
C502	—	—	15.95	12.09	16.97	12.17	17.59	12.28	19.33	12.83	95
C503	—	—	17.64	13.78	—	—	—	—	—	—	111
C612	—	—	—	—	17.91	13.11	18.54	13.23	20.24	13.74	115
C613	—	—	18.62	14.76	20.35	15.55	—	—	—	—	159

²⁾ Also available as **MR160/050** for a NEMA 56C frame motor. "H" dimension on the input side of a C303 with an MR160/050 or MR160/140 is 3.66.

³⁾ Also available as **MR250/180** for a NEMA 182/184TC frame motor.

⁴⁾ Also available as **MR300/180** for a NEMA 182/184TC, **MR300/210** for a NEMA 213/215TC, and **MR300/280** for a NEMA 284/286TC frame motor.

All weights are approximate.

Table No. 5 "C" Series – Input Dimension (Inches)

Base Module	MR160/050 ²⁾	MR200/180	MR250/210	MR300/250
	H ₁	H ₁	H ₁	H ₁
C303	3.54	—	—	—
C612	—	7.44	7.44	7.44
C613	—	—	7.44	—

²⁾ See Table No. 5

³⁾ Also available as **MR160/050** for a NEMA 56C frame motor.

⁴⁾ Also available as **MR250/180** for a NEMA 182/184TC frame motor.

⁵⁾ Also available as **MR300/180** for a NEMA 182/184TC, **MR300/210** for a NEMA 213/215TC, and **MR300/280** for a NEMA 284/286TC frame motor.

⁶⁾ Also available as **MR350/360** for a NEMA 364/365TC frame motor.

All weights are approximate.

Part No. Example
Food Duty Unit
Foot Mounting with Motor Adapter
C302F0620 MR160/140F
Beverage Duty Unit
C302F0620 MR160/140B

Also available in Housing Styles "G", "N", and "Q".